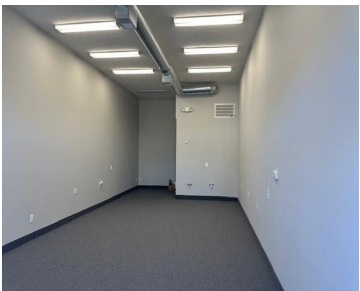


60, LAKEWOOD, HOLLAND, MI, 49424

https://tuckerbenner.com

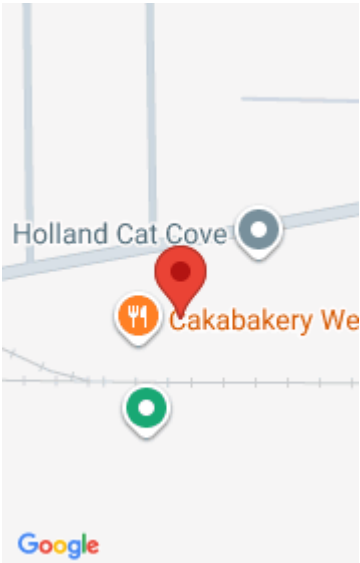


\$115,000



This well-maintained commercial office building presents an excellent investment opportunity in a highly desirable location. Featuring professional office suites with modern finishes, the property is designed for functionality, comfort, and long-term appeal. Ample on-site parking, convenient access to major roadways and public transportation, and proximity to nearby amenities enhance its strong tenant demand. With stable [...]

- 1 bath
- Office
- Commercial Sale
- Active



Call us now

Phone: (231)730-8781  
Email: tuckerbennerteam@gmail.com  
Address: 2747 Lakeshore Drive, Twin Lake, MI 49457

# Basics

**Category:** Commercial Sale

**Status:** Active

**Lot size:** 2.73 sq ft

**Bathrooms Full:** 1

**Business Type:** Professional/Office, Professional Service, Institutional

**Type:** Office

**Bathrooms:** 1 bath

**Year built:** 2003

**Lot Size Acres:** 2.73 acres

**County:** Ottawa

# Building Details

**Building Area Total:** 555 sq ft

**Heating:** Forced Air

**Number Of Buildings:** 1

**Number Of Units Total:** 1

**StoriesTotal:** 1

# Amenities & Features

**Inclusions:** Real Estate

**Utilities:** Cable Available, Natural Gas Connected, Electricity Connected

# Fees & Taxes

**Tax Assessed Value:** \$29,012

**Tax Annual Amount:** \$1,518.08

**Tax Year:** 2025

# School Information

**High School District:** West Ottawa

Call us now

# Miscellaneous

**CrossStreet:** Lakewood & Eastmont Ave

**Listing Terms:** Conventional, Cash

**Call us now**



Phone: (231)730-8781  
Email: tuckerbennerteam@gmail.com  
Address: 2747 Lakeshore Drive, Twin Lake, MI 49457

