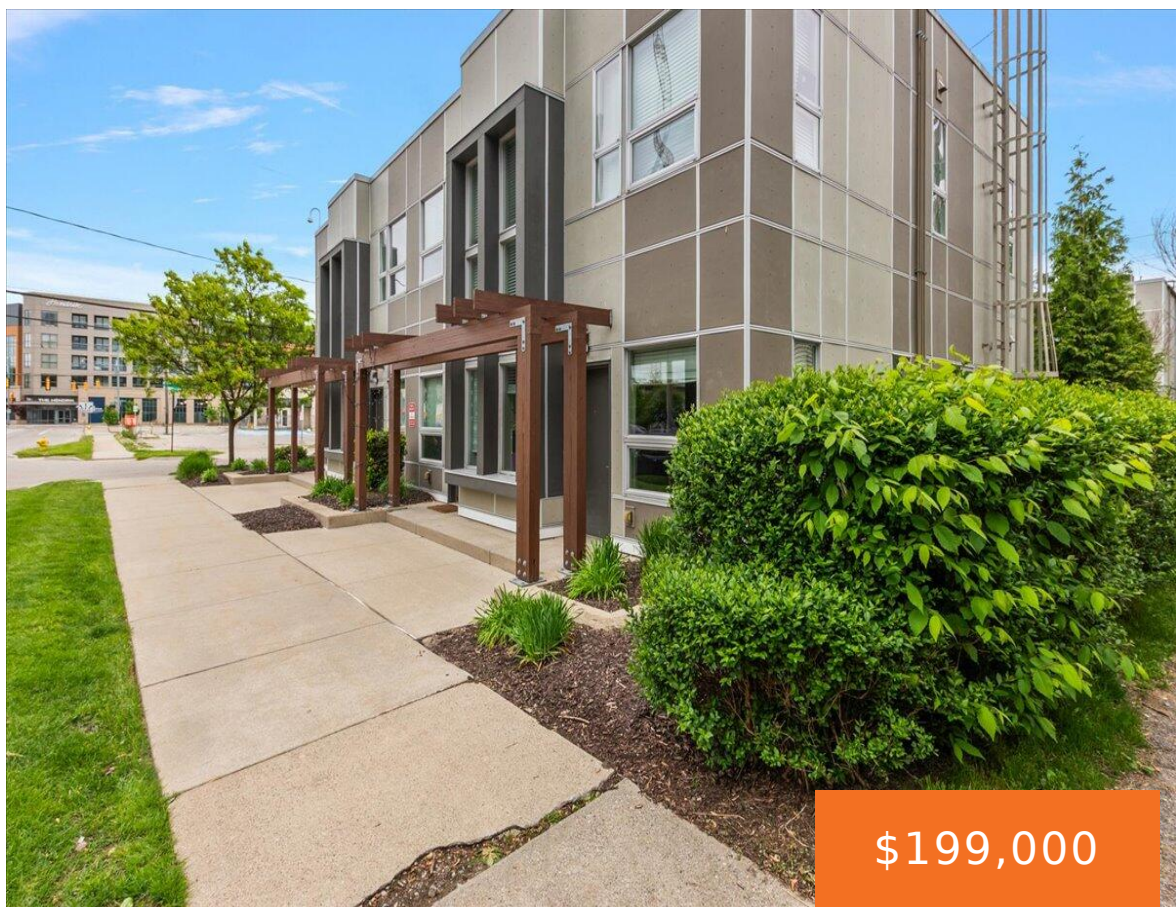
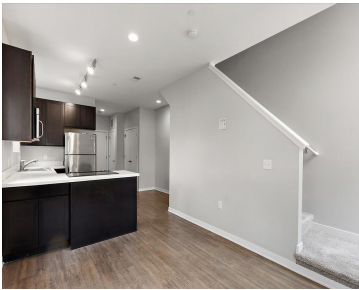


600, DOUGLAS, GRAND RAPIDS, MI, 49504

https://tuckerbenner.com

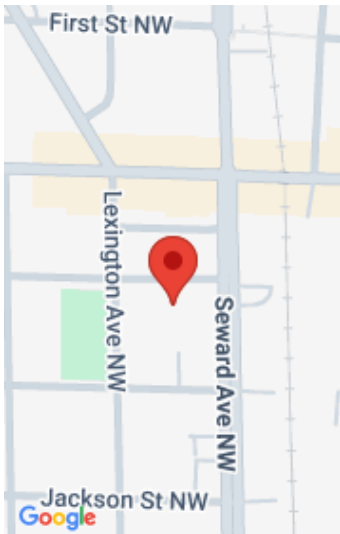


\$199,000



Now offering this executive 2 bed 2 bath condominium in a stellar location, in the popular Douglas condominium complex. Vaulted ceilings & massive windows with views of downtown Grand Rapids. Modern updates throughout the open floor plan. New kitchen with stainless steel appliances, hard surface countertops & an island for entertaining. 2 bedrooms & baths! [...]

- 2 beds
- 2 baths
- Condominium
- Residential
- Active
- 806 sq ft



Call us now

Phone: (231)730-8781
Email: tuckerbennerteam@gmail.com
Address: 2747 Lakeshore Drive, Twin Lake, MI 49457

Basics

Category: Residential

Status: Active

Bathrooms: 2 baths

Year built: 2014

Lot Size Acres: 0 acres

County: Kent

Type: Condominium

Bedrooms: 2 beds

Area: 806 sq ft

Bathrooms Full: 2

Rooms Total: 6

Building Details

Building Area Total: 806 sq ft

Construction Materials: Concrete, Stucco, Other

Architectural Style: Contemporary

Sewer: Public

Heating: Forced Air

Stories: 2

Basement: Slab

Amenities & Features

Laundry Features: In Unit, Laundry Closet

Utilities: Natural Gas Available, Electricity Available, Cable Available, Phone Connected, Natural Gas Connected, Cable Connected, Storm Sewer

Association Amenities: Fitness Center, Pets Allowed, Other

WaterSource: Public

Appliances: Dishwasher, Disposal, Dryer, Oven, Range, Refrigerator, Washer

Lot Features: Level, Sidewalk

Cooling: Central Air

Fees & Taxes

Call us now

Tax Assessed Value: \$118,668

Association Fee Frequency: Monthly

Association Fee: \$493.60

Tax Year: 2025

Tax Annual Amount: \$6,127.43

Association Fee Includes: Water, Trash, Snow Removal,
Sewer, Lawn/Yard Care

School Information

High School District: Grand Rapids

Miscellaneous

Road Surface Type: Paved

CrossStreet: Seward & Douglas

Listing Terms: Cash, Conventional

Call us now



Phone: (231)730-8781

Email: tuckerbennerteam@gmail.com

Address: 2747 Lakeshore Drive, Twin Lake, MI 49457

