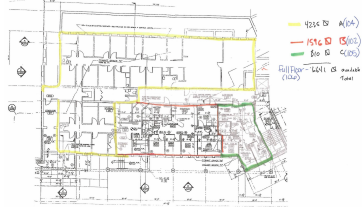


# 601, MICHIGAN, HOLLAND, MI, 49423

<https://tuckerbenner.com>



\$16



High profile office building located at 601 Michigan Ave, directly across from Holland Hospital. Office suite is located in the lower level with common entry to the building at the lower level doors with ample parking. Suite 102 is currently set up as a dental office with exam rooms, clerical and waiting areas. Plumbing is [...]

- 0 baths
- Office
- Commercial Lease
- Active



## Basics

**Category:** Commercial Lease  
**Status:** Active  
**Lot size:** 0 sq ft  
**Lot Size Acres:** 0 acres  
**County:** Ottawa

**Type:** Office  
**Bathrooms:** 0 baths  
**Year built:** 1965  
**Business Type:** Professional/Office



### Call us now

Phone: (231)730-8781  
 Email: [tuckerbennerteam@gmail.com](mailto:tuckerbennerteam@gmail.com)  
 Address: 2747 Lakeshore Drive, Twin Lake, MI 49457



---

## Building Details

**Building Area Total:** 3000 sq ft

**Sewer:** Public Sewer

**Roof:** Rubber

**Construction Materials:** Metal Siding

**Heating:** Natural Gas, Forced Air

**Number Of Buildings:** 1

---

## Amenities & Features

**Utilities:** Natural Gas Connected, Electric Connected, Cable Connected

**WaterSource:** Public

**Cooling:** Central Air

**Parking Features:** Paved

**Fireplaces Total:** 1

---

## School Information

**High School District:** Holland

---

## Miscellaneous

**Road Surface Type:** Paved

**CrossStreet:** 24th & 20th

**Tenant Pays:** Electricity, Janitorial Service, Management, Taxes, Trash Collection, Water, Sewer, Gas, Common Area Maintenance, Building Insurance



### Call us now

Phone: (231)730-8781

Email: tuckerbennerteam@gmail.com

Address: 2747 Lakeshore Drive, Twin Lake, MI 49457

