

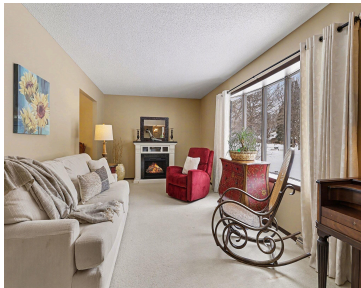
6033, CLEARBROOK, STEVENSVILLE, MI, 49127

https://tuckerbenner.com

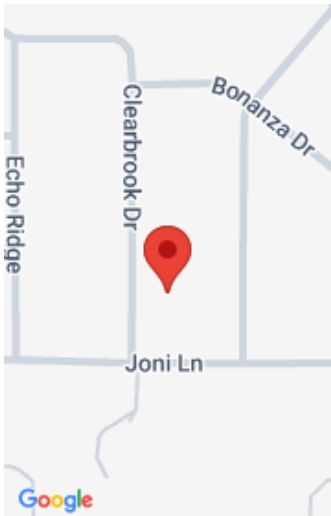


\$399,000

Well-maintained 3-bedroom home in the desirable Lakeshore School District. This inviting home features a spacious living room, a formal dining room, and a cozy kitchen with a breakfast area. A large family room with a remote controlled gas fireplace and sliding doors opens to the generous backyard—perfect for relaxing or entertaining. An additional room offers [...]



- 3 beds
- 2 baths
- Single Family Residence
- Residential
- Active
- 1998 sq ft



Call us now

Phone: (231)730-8781  
Email: tuckerbennerteam@gmail.com  
Address: 2747 Lakeshore Drive, Twin Lake, MI 49457

# Basics

<b>Category:</b> Residential	<b>Type:</b> Single Family Residence
<b>Status:</b> Active	<b>Bedrooms:</b> 3 beds
<b>Bathrooms:</b> 2 baths	<b>Area:</b> 1998 sq ft
<b>Lot size:</b> 0.39 sq ft	<b>Year built:</b> 1975
<b>Bathrooms Full:</b> 1	<b>Lot Size Acres:</b> 0.39 acres
<b>Rooms Total:</b> 10	<b>County:</b> Berrien
<b>Bathrooms Half:</b> 1	

# Building Details

<b>Building Area Total:</b> 1998 sq ft	<b>Construction Materials:</b> Aluminum Siding, Brick
<b>Architectural Style:</b> Traditional	<b>Sewer:</b> Public
<b>Heating:</b> Forced Air	<b>Stories:</b> 2
<b>Roof:</b> Composition	<b>Basement:</b> Crawl Space

# Amenities & Features

<b>Laundry Features:</b> Laundry Room, Main Level	<b>Flooring:</b> Carpet, Ceramic Tile
<b>Utilities:</b> Phone Available, Natural Gas Available, Electricity Available, Cable Available, Natural Gas Connected, Storm Sewer	<b>Parking Features:</b> Garage Faces Front, Garage Door Opener, Attached
<b>Fireplace Features:</b> Family Room, Gas Log	<b>Garage Spaces:</b> 2
<b>WaterSource:</b> Public	<b>Appliances:</b> Dishwasher, Dryer, Microwave, Oven, Range, Refrigerator, Washer
<b>Interior Features:</b> Ceiling Fan(s), Garage Door Opener, Eat-in Kitchen	<b>Lot Features:</b> Level
<b>Window Features:</b> Replacement	<b>Fireplaces Total:</b> 1
<b>Cooling:</b> Central Air	

## Call us now

---

# Fees & Taxes

**Tax Assessed Value:** \$99,868  
**Tax Annual Amount:** \$2,654

**Tax Year:** 2024

---

# School Information

**High School District:** Lakeshore

---

# Miscellaneous

**Road Surface Type:** Paved

**CrossStreet:** Joni Ln and Ponderosa Dr

**Listing Terms:** Cash, Conventional

**Call us now**