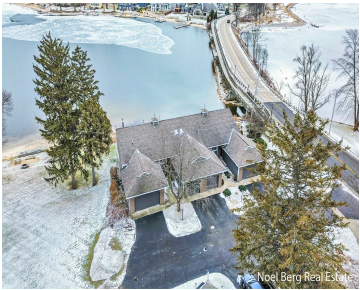


# 606, EDGEWATER, SPRING LAKE, MI, 49456

<https://tuckerbenner.com>



Bring your boat and enjoy this completely updated waterfront condo this summer! Whether you're looking for a full-time residence or a second home, this is a great opportunity. Beautiful full water views all season long just steps from Lloyd's Bayou. This 2 bedroom, 2 bath condo has a great layout with a fully updated kitchen [...]

- 2 beds
- 2 baths
- Condominium
- Residential
- Active
- 1792 sq ft



# Basics

**Category:** Residential

**Status:** Active

**Bathrooms:** 2 baths

**Lot size:** 0 sq ft

**Bathrooms Full:** 2

**Rooms Total:** 4

**Type:** Condominium

**Bedrooms:** 2 beds

**Area:** 1792 sq ft

**Year built:** 1988

**Lot Size Acres:** 0 acres

**County:** Ottawa

# Building Details

**Building Area Total:** 896 sq ft

**Architectural Style:** Traditional

**Heating:** Forced Air

**Roof:** Shingle

**Construction Materials:** Vinyl Siding

**Sewer:** Public Sewer

**Stories:** 1

**Basement:** Full, Walk-Out Access

# Amenities & Features

**Laundry Features:** Lower Level

**Waterfront Features:** Lake, River

**Garage Spaces:** 1

**Appliances:** Refrigerator, Range, Microwave, Dishwasher

**Window Features:** Insulated Windows

**Fireplaces Total:** 1

**Parking Features:** Attached

**Fireplace Features:** Gas Log, Living Room

**WaterSource:** Public

**Interior Features:** Ceiling Fan(s), Ceramic Floor, Garage Door Opener, Kitchen Island

**Exterior Features:** Balcony, Patio

**Cooling:** Central Air

# Fees & Taxes

Call us now

**Tax Assessed Value:** \$119,984

**Association Fee Frequency:** Monthly

**Association Fee:** \$400

**Tax Year:** 2024

**Tax Annual Amount:** \$4,865

**Association Fee Includes:** Trash, Snow Removal,  
Lawn/Yard Care

## School Information

**High School District:** Spring Lake

## Miscellaneous

**Road Surface Type:** Paved

**CrossStreet:** Leonard & Grand River

**Listing Terms:** Cash, Conventional

**Call us now**



Phone: (231)730-8781

Email: tuckerbennerteam@gmail.com

Address: 2747 Lakeshore Drive, Twin Lake, MI 49457

