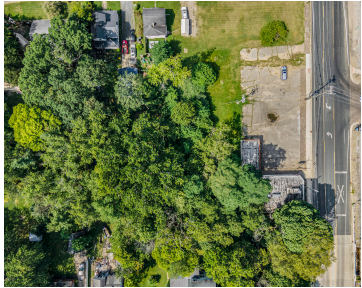


6086, MICHIGAN, KALAMAZOO, MI, 49048

<https://tuckerbenner.com>



\$275,000



Commercial building with over 3,200 sqft. Renovated to be a bakery/ice cream shop with a professional kitchen, a customer dine-in area and additional warehouse space all located on a high traffic street, E Michigan Ave. Amazing opportunity to start or expand your business in Comstock Village. Three parcels included in the sale, just under an [...]

- 2 baths
- Retail/Commercial
- Commercial Sale
- Active



Basics

Category: Commercial Sale

Status: Active

Lot size: 0.93 sq ft

Bathrooms Full: 2

Business Type: Other, Restaurant, Retail

Type: Retail/Commercial

Bathrooms: 2 baths

Year built: 1965

Lot Size Acres: 0.93 acres

County: Kalamazoo



Call us now

Phone: (231)730-8781
 Email: tuckerbennerteam@gmail.com
 Address: 2747 Lakeshore Drive, Twin Lake, MI 49457



Building Details

Building Area Total: 3240 sq ft

Sewer: Public Sewer

StoriesTotal: 1

Number Of Units Total: 1

Heating: Forced Air

Number Of Buildings: 1

Amenities & Features

Inclusions: Real Estate, Furniture, Equipment

Utilities: Phone Available, Water Available, Sewer Available, Natural Gas Available, Electricity Available, Cable Available, Phone Connected, Natural Gas Connected, Electricity Connected, Cable Connected, Broadband

Waterfront Features: Stream Creek

WaterSource: Public

Cooling: Central Air

Fees & Taxes

Tax Assessed Value: \$40,013

Tax Year: 2023

Tax Annual Amount: \$2,625.17

School Information

High School District: Comstock

Miscellaneous

Road Surface Type: Paved

CrossStreet: N 26th St

Listing Terms: Conventional, Cash



Call us now

Phone: (231)730-8781

Email: tuckerbennerteam@gmail.com

Address: 2747 Lakeshore Drive, Twin Lake, MI 49457

