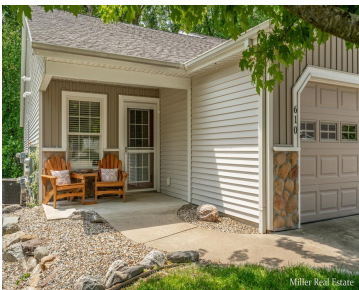


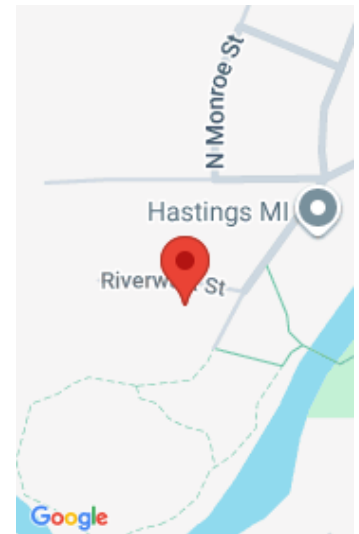
610, RIVERWALK, HASTINGS, MI, 49058

https://tuckerbenner.com



Excellent Hastings condominium located adjacent to the Riverwalk System & Tyden Park. This 3 bedroom 2 bath ranch condo with open floor plan including a 4 season porch with terrific wooded view, living room with cathedral ceilings & gas fireplace, large kitchen island, large master bedroom suite, guest bedroom, main floor laundry & 2nd full [...]

- 3 beds
- 2 baths
- Condominium
- Residential
- Active
- 1984 sq ft



Basics

Category: Residential

Status: Active

Bathrooms: 2 baths

Lot size: 0 sq ft

Bathrooms Full: 2

Rooms Total: 6

Type: Condominium

Bedrooms: 3 beds

Area: 1984 sq ft

Year built: 2008

Lot Size Acres: 0 acres

County: Barry

Building Details

Building Area Total: 1484 sq ft

Architectural Style: Ranch

Heating: Forced Air

Roof: Composition

Construction Materials: Stone, Vinyl Siding

Sewer: Public

Stories: 1

Basement: Daylight, Full

Amenities & Features

Laundry Features: Laundry Room, Main Level

Utilities: Natural Gas Connected

Parking Features: Garage Faces Front, Garage Door Opener, Attached

Garage Spaces: 2

Appliances: Dishwasher, Disposal, Dryer, Microwave, Range, Refrigerator, Washer

Window Features: Insulated Windows

Fireplaces Total: 1

Flooring: Carpet, Vinyl

Association Amenities: End Unit, Pets Allowed

Fireplace Features: Living Room

WaterSource: Private Water

Interior Features: Ceiling Fan(s), Garage Door Opener, Center Island

Patio And Porch Features: Covered, Porch(es)

Cooling: Central Air

Fees & Taxes

Call us now



Tax Assessed Value: \$132,970
Association Fee: \$250
Tax Annual Amount: \$5,186

Association Fee Frequency: Monthly
Tax Year: 2025

School Information

High School District: Hastings

Miscellaneous

Road Surface Type: Paved

CrossStreet: N Taffee Dr

Listing Terms: Cash, Conventional

Call us now