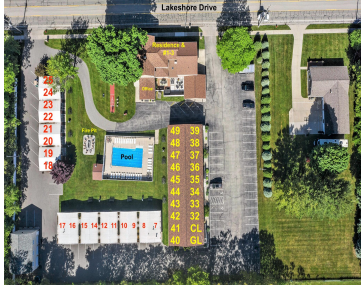


612, LAKESHORE, LUDINGTON, MI, 49431

<https://tuckerbenner.com>



\$5,100,000



Welcome to your dream investment opportunity in the waterfront city of Ludington, Michigan! Presenting a magnificent 39-unit motel, situated on over 2.5 acres, that exudes charm, comfort, and endless possibilities. Located just one block away from the Stearns Park beach, on the sugar sand shore of Lake Michigan, this gem offers the perfect blend of [...]

- 43 baths
- Business
- Commercial Sale
- Active



Basics

Category: Commercial Sale
Status: Active
Lot size: 2.52 sq ft
Lot Size Acres: 2.52 acres
County: Mason

Type: Business
Bathrooms: 43 baths
Year built: 1890
Business Type: Other



Call us now

Phone: (231)730-8781
 Email: tuckerbennerteam@gmail.com
 Address: 2747 Lakeshore Drive, Twin Lake, MI 49457



Building Details

Building Area Total: 0 sq ft

Sewer: Public Sewer

Foundation Details: Other

Number Of Units Total: 39

StoriesTotal: 2

Number Of Buildings: 6

Amenities & Features

Inclusions: 1, 1, 1

Utilities: Phone Available, Water Available, Sewer Available, Natural Gas Available, Electricity Available, Cable Available, Phone Connected, Natural Gas Connected, Electricity Connected, Cable Connected, Broadband

Parking Features: Asphalt, Driveway, Concrete

Waterfront Features: Public Access 1 Mile or Less

WaterSource: Public

Fireplaces Total: 6

Cooling: Central Air

Fees & Taxes

Tax Assessed Value: \$758,848

Tax Year: 2024

Tax Annual Amount: \$43,019.57

School Information

High School District: Ludington

Miscellaneous

Road Surface Type: Paved

CrossStreet: Tinkham Ave

Listing Terms: Conventional, Cash



Call us now

Phone: (231)730-8781

Email: tuckerbennerteam@gmail.com

Address: 2747 Lakeshore Drive, Twin Lake, MI 49457

