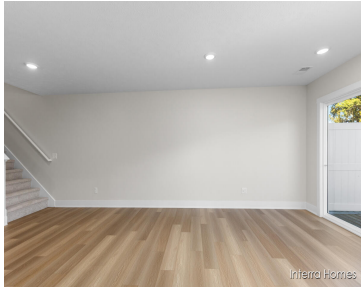


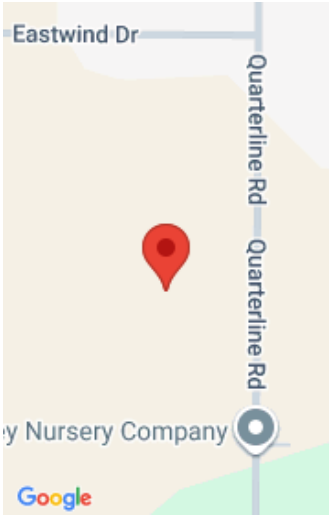
6122, BURGESS DR, SPRING LAKE, MI, 49456

https://tuckerbenner.com



****This home is eligible for rate lock incentive being offered by seller. Contact listing agent for additional terms & conditions.**** Welcome to Deer Creek Meadows Townhomes! Interra Homes presents our newest townhome development in the Fruitport School District. These townhomes feature 3 bedrooms and 2.5 baths in a wonderfully designed floor plan. The kitchen includes [...]

- 3 beds
- 3 baths
- Single Family Residence
- Residential
- Active
- 1977 sq ft



Basics

Category: Residential **Type:** Single Family Residence
Status: Active **Bedrooms:** 3 beds
Bathrooms: 3 baths **Area:** 1977 sq ft
Year built: 2025 **Subdivision Name:** Deer Creek Meadows Townhomes
Bathrooms Full: 2 **Lot Size Acres:** 0 acres
Rooms Total: 12 **County:** Muskegon
Bathrooms Half: 1

Building Details

Building Area Total: 1495 sq ft **Construction Materials:** Vinyl Siding
Architectural Style: Traditional **Sewer:** Public
Heating: Forced Air **Stories:** 2
Roof: Composition **Basement:** Daylight

Amenities & Features

Laundry Features: Laundry Room, Upper Level **Flooring:** Laminate
Utilities: Natural Gas Connected **Association Amenities:** Playground
Parking Features: Garage Faces Front, Attached **Waterfront Features:** Pond
Garage Spaces: 2 **WaterSource:** Public
Appliances: Dishwasher, Disposal, Microwave, Range, Refrigerator **Interior Features:** Pantry
Lot Features: Sidewalk **Window Features:** Screens, Insulated Windows
Patio And Porch Features: Deck **Cooling:** SEER 13 or Greater

Fees & Taxes

Call us now

Association Fee Frequency: Monthly

Association Fee: \$230

Association Fee Includes: Water, Snow Removal, Sewer, Lawn/Yard Care

School Information

High School District: Fruitport

Miscellaneous

CrossStreet: Quarterline & Pontaluna

Listing Terms: Cash, Conventional

Call us now