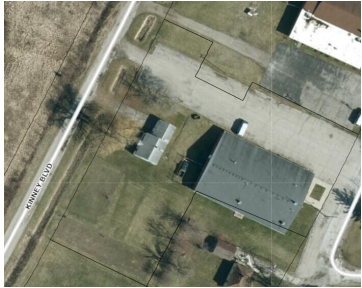


615, IRVING PARK, SAGINAW, MI, 48601

<https://tuckerbenner.com>



Situated on a prime 1.13-acre lot, this property provides convenient access to both Irving Park Ave and Kinney Blvd, ensuring excellent visibility and accessibility. Its location in a vibrant neighborhood adds to its appeal, with easy access to major roads and public transportation. Whether you're looking to expand your church home, downsize, or find a [...]

- 4 baths
- Retail/Commercial
- Commercial Sale
- Active



Basics

Category: Commercial Sale
Status: Active
Lot size: 1.14 sq ft
Bathrooms Full: 4
Business Type: Other

Type: Retail/Commercial
Bathrooms: 4 baths
Year built: 1939
Lot Size Acres: 1.14 acres
County: Saginaw



Call us now

Phone: (231)730-8781
 Email: tuckerbennerteam@gmail.com
 Address: 2747 Lakeshore Drive, Twin Lake, MI 49457



Building Details

Building Area Total: 10088 sq ft

Sewer: Public Sewer

StoriesTotal: 10088

Number Of Units Total: 1

Heating: Forced Air, Hot Water

Number Of Buildings: 2

Amenities & Features

Parking Total: 60

Utilities: Phone Available, Water Available, Sewer Available, Natural Gas Available, Electricity Available, Cable Available, Phone Connected, Natural Gas Connected, Electricity Connected, Cable Connected, Broadband

Cooling: Central Air

Inclusions: Other, Real Estate, Inventory, Furniture, Equipment

WaterSource: Public

Fees & Taxes

Tax Year: 2023

School Information

High School District: Buena Vista

Miscellaneous

CrossStreet: N Outer Dr and Kinney Blvd

Listing Terms: Cash



Call us now

Phone: (231)730-8781

Email: tuckerbennerteam@gmail.com

Address: 2747 Lakeshore Drive, Twin Lake, MI 49457

