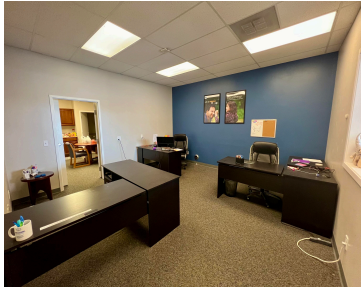


6216, STADIUM, OSHTEMO, MI, 49077

<https://tuckerbenner.com>



Strategically situated along bustling Stadium Dr in Oshtemo township, this property benefits from high visibility with approximately 20,000 vehicles passing by daily. Within a vibrant retail center, neighboring tenants include renowned establishments such as Erbelli's Gourmet Pizza & Italian Bistro, Island Heat Tanning, Tavani Salon & Spa, and more. Presently occupied by an Allstate office [...]

- 0 baths
- Retail/Commercial
- Commercial Lease
- Active



Basics



Call us now

Phone: (231)730-8781
Email: tuckerbennerteam@gmail.com
Address: 2747 Lakeshore Drive, Twin Lake, MI 49457



Category: Commercial Lease **Type:** Retail/Commercial

Status: Active

Bathrooms: 0 baths

Lot size: 0 sq ft

Year built: 1988

Lot Size Acres: 0 acres

Business Type: Professional Service, Professional/Office, Storage, Retail, Recreation, Distribution

County: Kalamazoo

Building Details

Building Area Total: 1100 sq ft

Sewer: Public Sewer

Roof: Concrete

Number Of Buildings: 1

Amenities & Features

Utilities: Phone Connected, Natural Gas Connected, Electric Connected, Cable Connected

Parking Features: Paved

WaterSource: Public

Fireplaces Total: 1

Cooling: Central Air

School Information

High School District: Kalamazoo

Miscellaneous

Road Surface Type: Paved

CrossStreet: Stadium Dr. / 9th

Tenant Pays: Electricity, Janitorial Service, Management, Taxes, Trash Collection, Water, Sewer, Gas, Common Area Maintenance, Building Insurance



Call us now

Phone: (231)730-8781

Email: tuckerbennerteam@gmail.com

Address: 2747 Lakeshore Drive, Twin Lake, MI 49457

