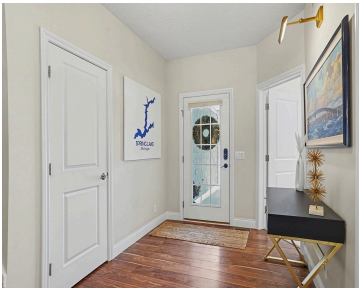


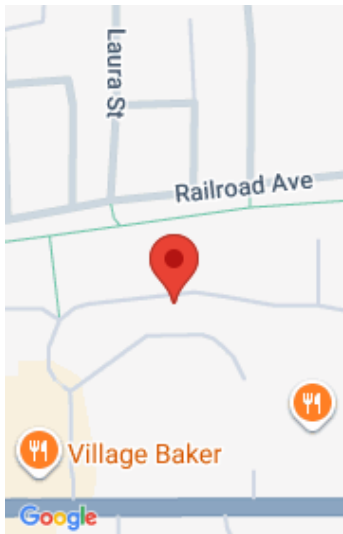
# 627, PARKVIEW, SPRING LAKE, MI, 49456

<https://tuckerbenner.com>



Discover luxury in this rare detached condo with no shared walls, located in one of Spring Lake’s most prestigious communities. Built in 2014 and offering just over 3,000 square feet of finished living space across three levels, this stand-alone residence provides the privacy of a single-family home. The main floor features an open-concept design with [...]

- 4 beds
- 4 baths
- Condominium
- Residential
- Active
- 3681 sq ft



# Basics

**Category:** Residential

**Status:** Active

**Bathrooms:** 4 baths

**Year built:** 2014

**Lot Size Acres:** 0 acres

**County:** Ottawa

**Type:** Condominium

**Bedrooms:** 4 beds

**Area:** 3681 sq ft

**Bathrooms Full:** 3

**Rooms Total:** 9

**Bathrooms Half:** 1

# Building Details

**Building Area Total:** 2043 sq ft

**Architectural Style:** Craftsman

**Heating:** Forced Air

**Roof:** Composition

**Construction Materials:** Vinyl Siding

**Sewer:** Public

**Stories:** 2

**Basement:** Daylight

# Amenities & Features

**Laundry Features:** Laundry Room, Main Level

**Association Amenities:** Pets Allowed

**Waterfront Features:** Lake

**Garage Spaces:** 2

**Appliances:** Humidifier, Dishwasher, Freezer, Range, Refrigerator

**Window Features:** Insulated Windows, Window Treatments

**Fireplaces Total:** 1

**Flooring:** Ceramic Tile, Laminate

**Parking Features:** Garage Faces Front, Attached

**Fireplace Features:** Gas Log, Living Room

**WaterSource:** Public

**Interior Features:** Ceiling Fan(s), Garage Door Opener, Center Island, Eat-in Kitchen

**Patio And Porch Features:** Deck, Porch(es)

**Cooling:** Central Air

# Fees & Taxes

Call us now

**Tax Assessed Value:** \$213,465

**Association Fee:** \$220

**Tax Annual Amount:** \$7,239

**Association Fee Frequency:** Monthly

**Tax Year:** 2025

**Association Fee Includes:** Other, Trash, Snow Removal,  
Lawn/Yard Care

## School Information

**High School District:** Spring Lake

**HighSchool:** Spring Lake High School

**Middle Or Junior School:** Spring Lake  
Middle School

**Elementary School:** Holmes Elementary School

## Miscellaneous

**Road Surface Type:** Paved

**CrossStreet:** Lakeview Ave & Ellie Ct

**Listing Terms:** Cash, VA Loan, Conventional

Call us now