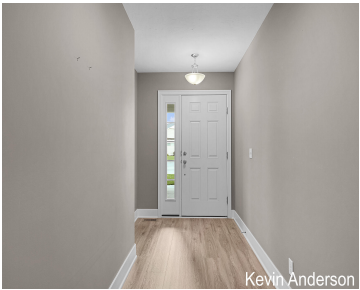


6511, POTTERS WHEEL, CALEDONIA, MI, 49316

https://tuckerbenner.com



Welcome to 6511 Potters Wheel Dr. Located in the highly sought-after Avalon Pointe community, this beautifully maintained end-unit condo offers style, comfort, and convenience. Step inside to an open floor plan filled with natural light, featuring a spacious living area, a well-appointed kitchen with quartz countertops and a tiled backsplash, a dining area, and a [...]

- 2 beds
- 2 baths
- Condominium
- Residential
- Active
- 2075 sq ft



Basics

Category: Residential
Status: Active
Bathrooms: 2 baths
Lot size: 0 sq ft
Subdivision Name: Avalon Pointe
Lot Size Acres: 0 acres
County: Kent

Type: Condominium
Bedrooms: 2 beds
Area: 2075 sq ft
Year built: 2017
Bathrooms Full: 2
Rooms Total: 7

Building Details

Building Area Total: 2075 sq ft
Construction Materials: Stone, Vinyl Siding
Architectural Style: Ranch
Sewer: Public
Heating: Forced Air
Stories: 2
Roof: Composition
Basement: Slab

Amenities & Features

Laundry Features: Main Level
Association Amenities: Clubhouse, End Unit, Pets Allowed, Pool
Garage Spaces: 2
Appliances: Humidifier, Dishwasher, Disposal, Dryer, Microwave, Range, Refrigerator, Washer
Window Features: Screens, Insulated Windows
Cooling: Central Air
Flooring: Carpet, Laminate
Parking Features: Garage Faces Front, Attached
WaterSource: Public
Interior Features: Garage Door Opener
Patio And Porch Features: Patio

Fees & Taxes

Call us now

Tax Assessed Value: \$167,425

Association Fee Frequency: Monthly

Association Fee: \$285

Tax Year: 2025

Tax Annual Amount: \$4,564.93

Association Fee Includes: Other, Water, Trash, Snow Removal, Sewer, Lawn/Yard Care

School Information

High School District: Kentwood

Miscellaneous

Road Surface Type: Paved

CrossStreet: Gracepoint Dr & Leisure Creek

Listing Terms: Cash, Conventional

Call us now