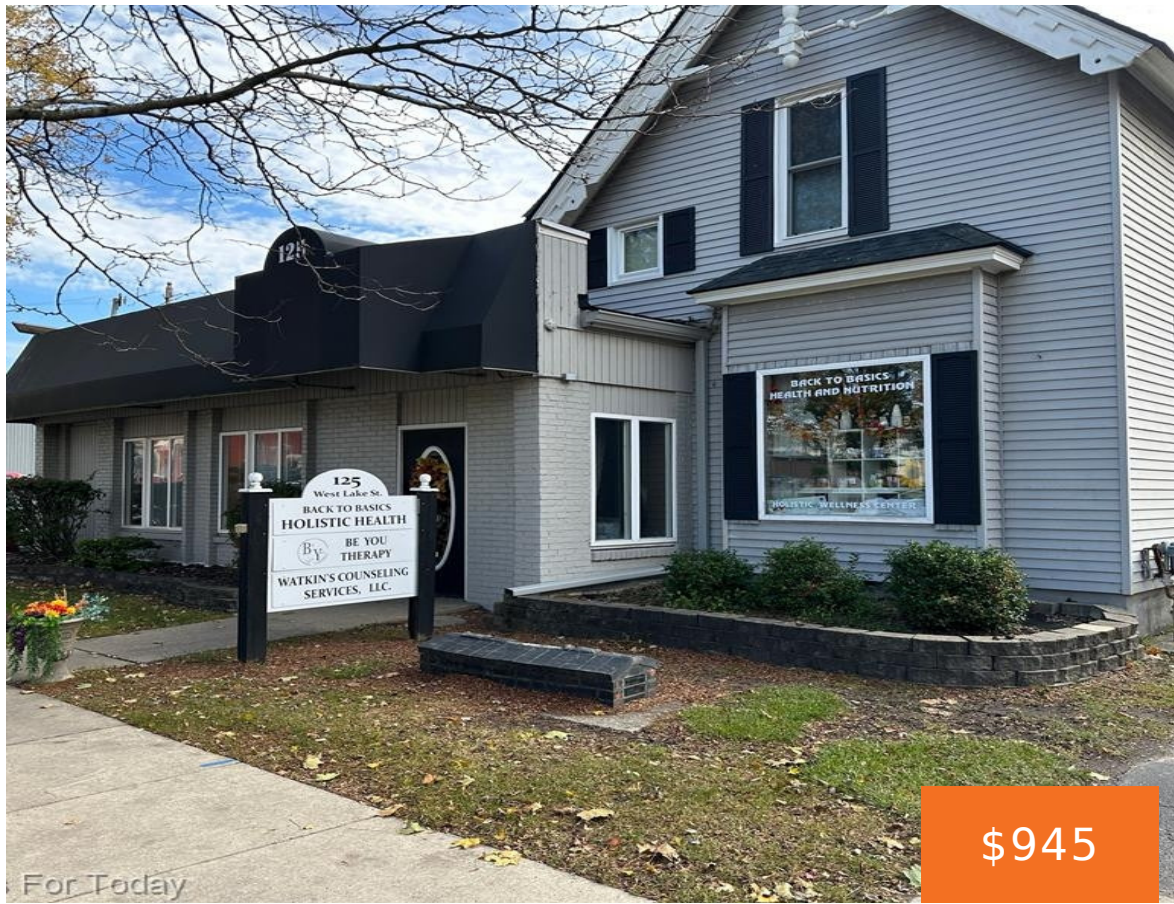


SOUTH LYON, MI, 48178

https://tuckerbenner.com



Take advantage of extremely competitive leasing rates and an occupancy-ready unit! This conveniently located office space is on West Lake Street, just west of South Lafayette Street, in the heart of South Lyon. The entire second floor is available for lease, including three office spaces, or you can lease each space separately. This property includes [...]

- 0 baths
- Office
- Commercial Lease
- Active

Basics

Category: Commercial Lease **Type:** Office
Status: Active **Bathrooms:** 0 baths
Lot size: 0.2 sq ft **Year built:** 1986
Lot Size Acres: 0.2 acres **Business Type:** Professional Service, Professional/Office, Retail
County: Oakland



Call us now

Phone: (231)730-8781
 Email: tuckerbennerteam@gmail.com
 Address: 2747 Lakeshore Drive, Twin Lake, MI 49457



Building Details

Building Area Total: 2899 sq ft

Sewer: Public Sewer

Number Of Buildings: 1

Construction Materials: Vinyl Siding

Roof: Concrete

Amenities & Features

Utilities: Electric Connected

Fireplaces Total: 1

WaterSource: Public

Fees & Taxes

Tax Assessed Value: \$92,450

Tax Year: 2022

School Information

High School District: South Lyon

Miscellaneous

CrossStreet: West Lake Street & Lafayette S



Call us now

Phone: (231)730-8781

Email: tuckerbennerteam@gmail.com

Address: 2747 Lakeshore Drive, Twin Lake, MI 49457

