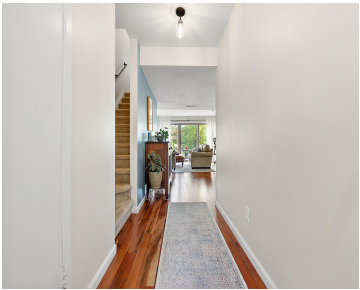


670, PENINSULA, ANN ARBOR, MI, 48105

https://tuckerbenner.com

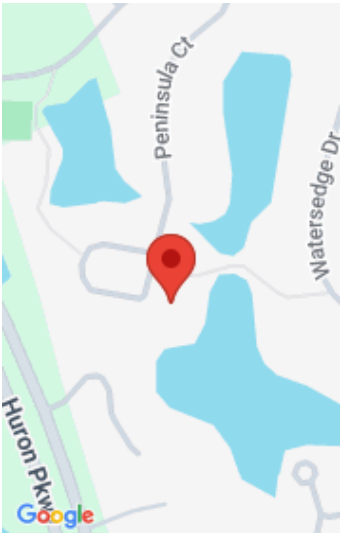


\$315,000



Rare Geddes Lake waterfront condo w/ stunning views! This light-filled move-in ready 2 bed, 1.5 bath has been thoughtfully upgraded. The 2023 remodeled kitchen shines w/ quartz counters, Italian subway tile, refinished cabinets, ceramic tile floor, & SS appliances. Enjoy the wall of windows that lead to your private lakefront patio. Throughout the condo, you'll [...]

- 2 beds
- 2 baths
- Condominium
- Residential
- Active
- 1152 sq ft



Call us now

Phone: (231)730-8781
Email: tuckerbennerteam@gmail.com
Address: 2747 Lakeshore Drive, Twin Lake, MI 49457

Basics

Category: Residential

Status: Active

Bathrooms: 2 baths

Lot size: 0.02 sq ft

Subdivision Name: Geddes Lake

Lot Size Acres: 0.02 acres

County: Washtenaw

Type: Condominium

Bedrooms: 2 beds

Area: 1152 sq ft

Year built: 1976

Bathrooms Full: 1

Rooms Total: 7

Bathrooms Half: 1

Building Details

Building Area Total: 1152 sq ft

Construction Materials: Concrete, HardiPlank Type

Architectural Style: Contemporary

Sewer: Public

Heating: Forced Air

Stories: 2

Roof: Asphalt, Shingle

Basement: Slab

Amenities & Features

Call us now

Laundry Features: Laundry Room, Main Level, Sink

Flooring: Carpet, Ceramic Tile, Tile, Wood

Association Amenities: Clubhouse, Pets Allowed, Playground, Pool, Tennis Court(s), Trail(s), Other

Waterfront Features: Lake

WaterSource: Public

Interior Features: Ceiling Fan(s), Garage Door Opener

Window Features: Screens, Window Treatments

Cooling: Central Air

Pool Features: In Ground, Outdoor/Above

Utilities: Natural Gas Connected

Parking Features: Garage Faces Front, Attached

Garage Spaces: 1

Appliances: Dishwasher, Disposal, Dryer, Freezer, Microwave, Oven, Range, Refrigerator, Washer

Lot Features: Cul-De-Sac

Patio And Porch Features: Patio, Porch(es)

Fees & Taxes

Tax Assessed Value: \$129,596

Association Fee Frequency: Monthly

Association Fee: \$443

Tax Year: 2025

Tax Annual Amount: \$6,879.40

Association Fee Includes: Water, Trash, Snow Removal, Lawn/Yard Care

School Information

High School District: Ann Arbor

HighSchool: Huron High School

Middle Or Junior School: Clague Middle School

Elementary School: King - Westwood Elementary School

Miscellaneous

Road Surface Type: Paved

CrossStreet: Huron Pkwy and Geddes

Listing Terms: Cash, FHA, VA Loan, MSHDA, Conventional

Call us now