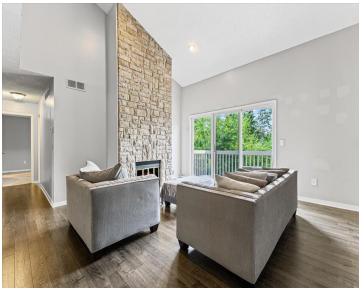
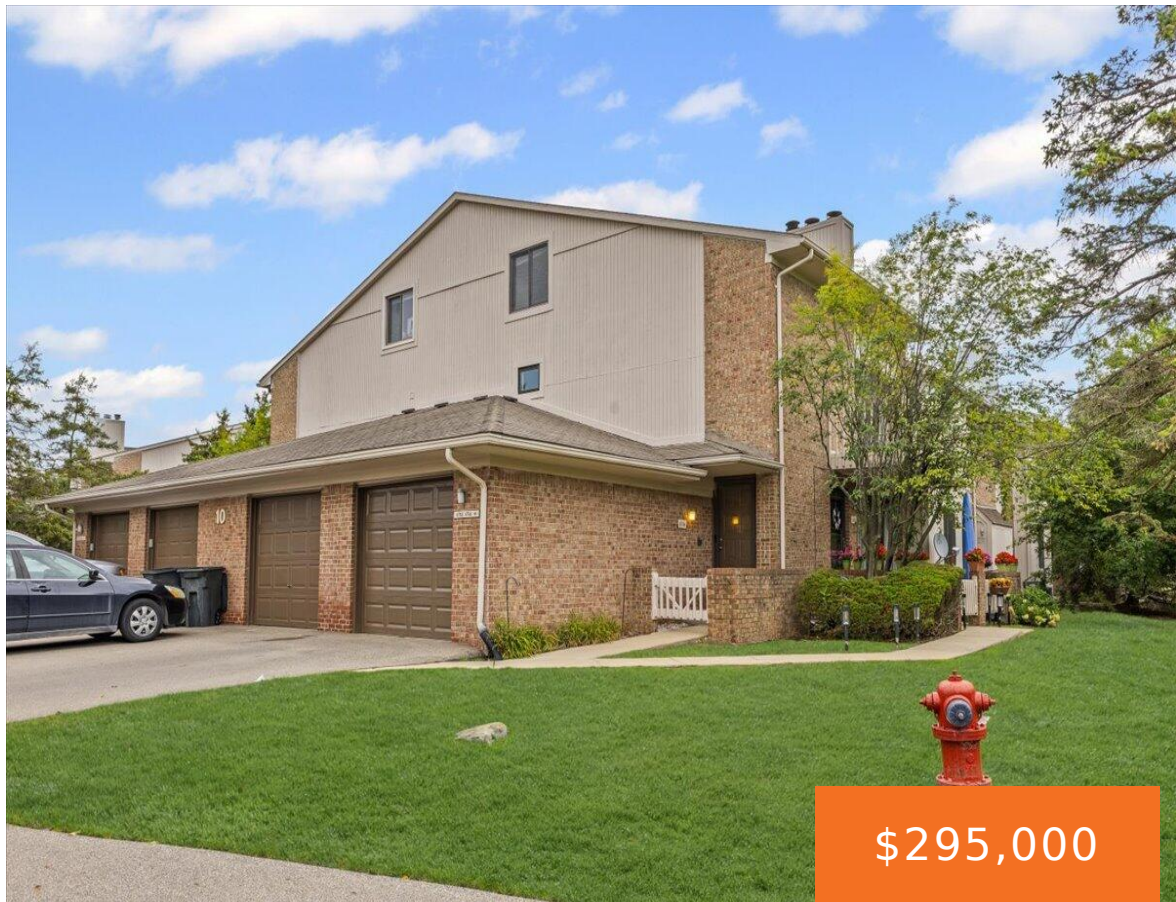


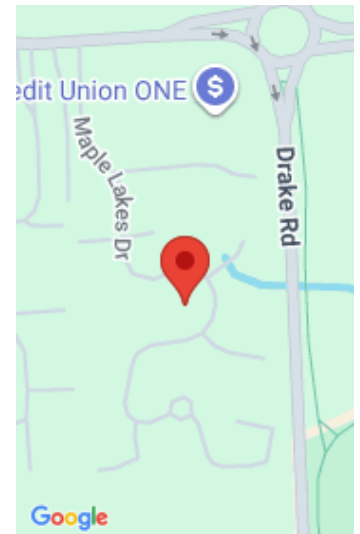
6716, MAPLE LAKES, WEST BLOOMFIELD, MI, 48322

https://tuckerbenner.com



Welcome to your new home in the heart of West Bloomfield! This spacious three-bedroom, three-and-a-half-bath condominium blends style and comfort with updates today’s buyers will love. The soaring floor-to-ceiling stone fireplace creates a stunning focal point, while the open layout and neutral palette make it easy to move right in and add your personal touch. [...]

- 32 beds
- 27 baths
- Condominium
- Residential
- Active
- 2658 sq ft



Call us now



Phone: (231)730-8781

Email: tuckerbennerteam@gmail.com

Address: 2747 Lakeshore Drive, Twin Lake, MI 49457



Basics

Category: Residential

Status: Active

Bathrooms: 27 baths

Lot size: 0 sq ft

Bathrooms Full: 21

Rooms Total: 6

Bathrooms Half: 6

Type: Condominium

Bedrooms: 32 beds

Area: 2658 sq ft

Year built: 1985

Lot Size Acres: 0 acres

County: Oakland

Building Details

Building Area Total: 1958 sq ft

Architectural Style: Other

Heating: Forced Air

Roof: Asphalt

Construction Materials: Brick

Sewer: Public

Stories: 2

Basement: Full

Amenities & Features

Laundry Features: In Kitchen

Parking Features: Garage Door Opener, Attached

Fireplace Features: Living Room

WaterSource: Public

Flooring: Carpet, Ceramic Tile, Laminate

Waterfront Features: Pond

Garage Spaces: 1

Appliances: Dryer, Range, Refrigerator, Washer

Spa Features: Whirlpool Tub

Exterior Features: Other

Cooling: Central Air

Interior Features: Ceiling Fan(s), Garage Door Opener

Patio And Porch Features: Other

Fireplaces Total: 1

Fees & Taxes

Call us now

Tax Assessed Value: \$122,642 **Association Fee Frequency:** Monthly
Association Fee: \$518.79 **Tax Year:** 2024
Tax Annual Amount: \$3,818.17 **Association Fee Includes:** Snow Removal, Lawn/Yard Care

School Information

High School District: Walled Lake

Miscellaneous

Road Surface Type: Paved **CrossStreet:** S of 15 Mile W of Drake
Listing Terms: FHA, VA Loan, Conventional

Call us now