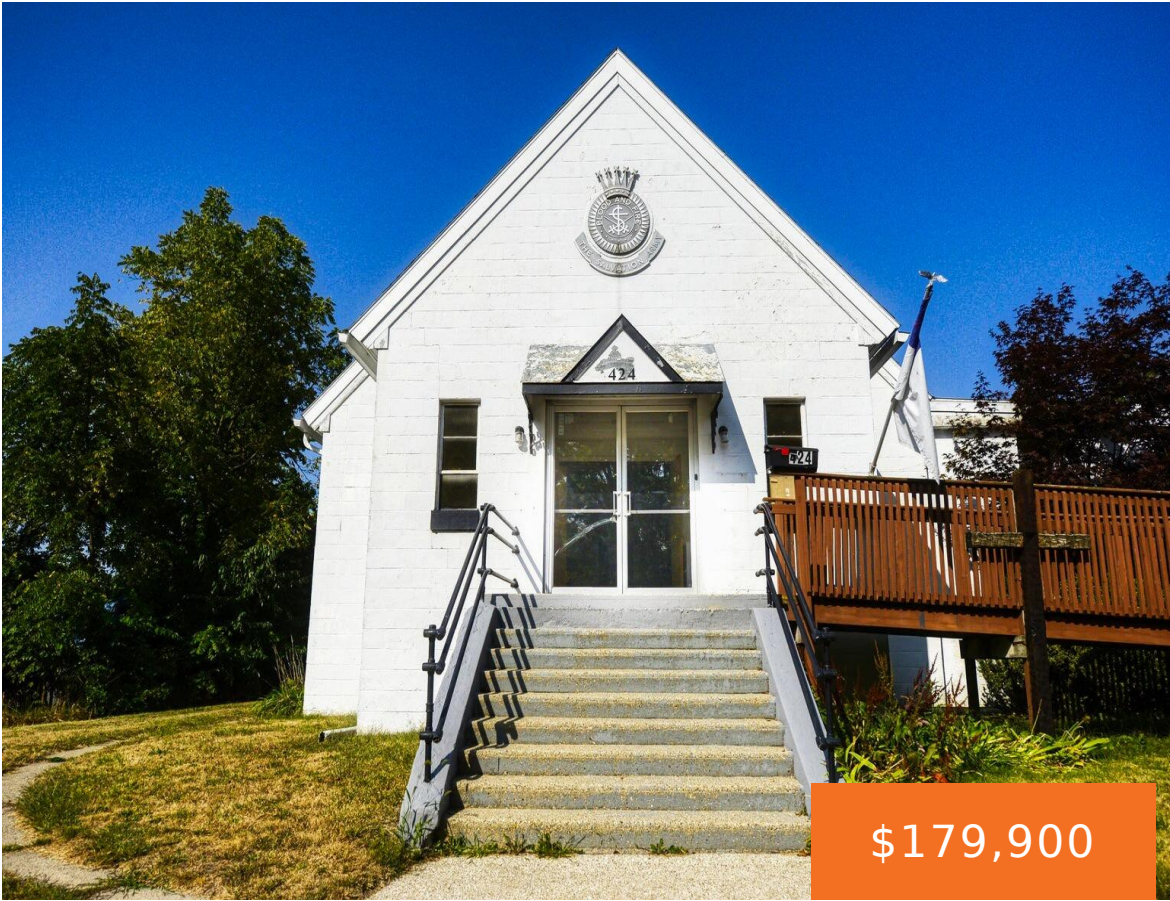


NILES, MI, 49120

<https://tuckerbenner.com>



\$179,900



Niles Landmark Building previously sold to convert to single family or commercial endeavor. Buyer’s plans changed and this stand out location could provide many uses. Such as profession offices, recreation, retail, storage – Bring your ideas and make it happen!

- 2 baths
- Business
- Commercial Sale
- Active

Basics

Category: Commercial Sale

Status: Active

Lot size: 0.42 sq ft

Bathrooms Full: 2

Business Type: Other, Professional/Office, Professional Service, Distribution, Storage, Retail, Recreation

Type: Business

Bathrooms: 2 baths

Year built: 1900

Lot Size Acres: 0.42 acres

County: Berrien



Call us now

Phone: (231)730-8781
 Email: tuckerbennerteam@gmail.com
 Address: 2747 Lakeshore Drive, Twin Lake, MI 49457



Building Details

Building Area Total: 6070 sq ft

Construction Materials: Block

Heating: Forced Air

Roof: Composition

Number Of Buildings: 1

Number Of Units Total: 1

Sewer: Public Sewer

StoriesTotal: 6070

Foundation Details: Block

Amenities & Features

Inclusions: Other, Real Estate **Utilities:** Natural Gas Available, Phone Connected, Natural Gas Connected, Electricity Connected, Water Available, Sewer Available

WaterSource: Public

Cooling: Wall Unit(s)

Fees & Taxes

Tax Year: 1999

School Information

High School District: Niles

Miscellaneous

CrossStreet: Cass St.

Listing Terms: Conventional, Cash



Call us now

Phone: (231)730-8781

Email: tuckerbennerteam@gmail.com

Address: 2747 Lakeshore Drive, Twin Lake, MI 49457

