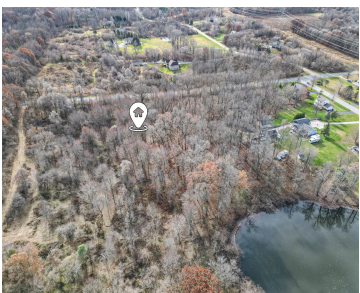
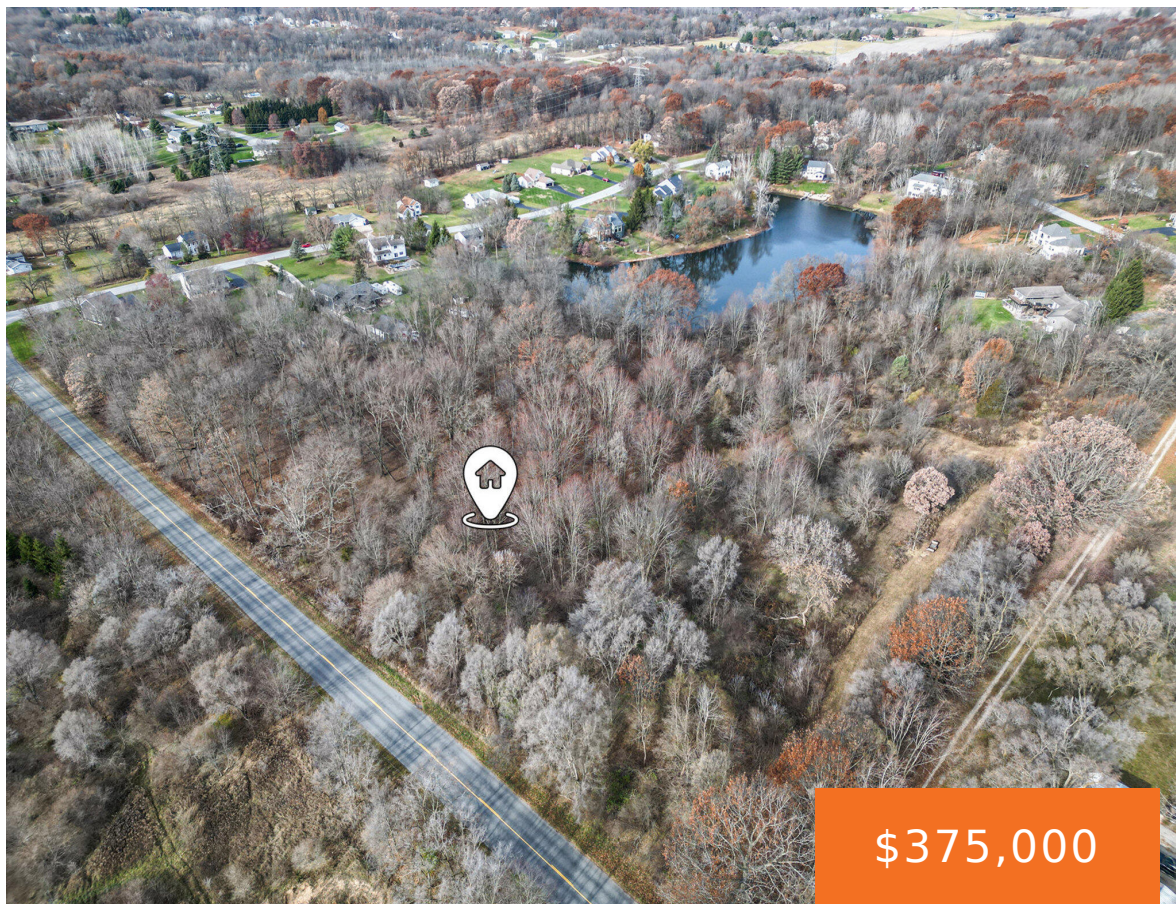


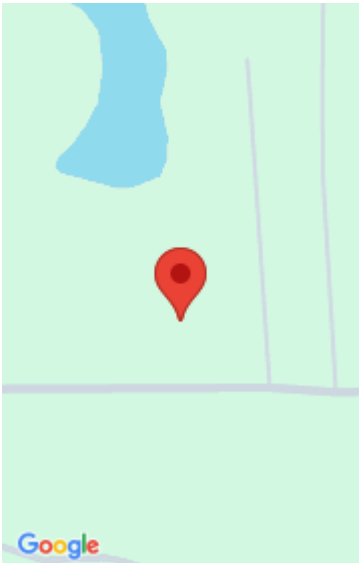
6769, SUMMERHILL, ALTO, MI, 49302

https://tuckerbenner.com



Opportunity in Caledonia School District for a building site on approximately 12.2- acres with large pond frontage, and mature trees. Close to new walking/riding paths around Campau lake and Kettle Lake Elementary. This site has passed perk tests in 2 locations currently and more soil tests could be done. There is access for a private [...]

- 0 baths
- Acreage
- Land
- Active



Call us now



Phone: (231)730-8781
Email: tuckerbennerteam@gmail.com
Address: 2747 Lakeshore Drive, Twin Lake, MI 49457



Basics

Category: Land

Status: Active

Lot size: 12.21 sq ft

County: Kent

Type: Acreage

Bathrooms: 0 baths

Lot Size Acres: 12.21 acres

Amenities & Features

Utilities: Natural Gas Available, Electricity Available, None

Waterfront Features: Pond

Lot Features: High Bank, Buildable, Wooded

Fees & Taxes

Tax Assessed Value: \$2,500

Tax Year: 2025

Tax Annual Amount: \$75

School Information

High School District: Caledonia

Miscellaneous

CrossStreet: 68th and Snow

Listing Terms: Cash, Conventional

Call us now