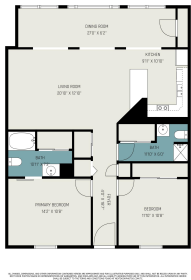


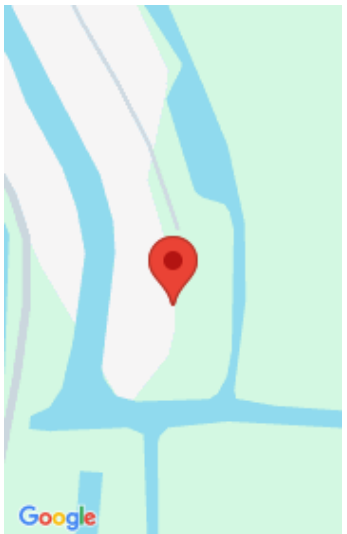
68570, MORTON, EDWARDSBURG, MI, 49112

https://tuckerbenner.com



Welcome to lakeside living at its finest! This charming 2-bedroom, 2-bath condo is perfectly situated on the second floor of a sought-after lake community. Enjoy spacious, open-concept living with serene views and abundant natural light. The unit includes a boat slip, ideal for water enthusiasts, and offers exclusive access to three beautiful lakes— Juno, Painter [...]

- 2 beds
- 2 baths
- Condominium
- Residential
- Active
- 1155 sq ft



Basics

Category: Residential

Status: Active

Bathrooms: 2 baths

Lot size: 0.04 sq ft

Bathrooms Full: 2

Rooms Total: 4

Type: Condominium

Bedrooms: 2 beds

Area: 1155 sq ft

Year built: 1970

Lot Size Acres: 0.04 acres

County: Cass

Building Details

Building Area Total: 1155 sq ft

Architectural Style: Traditional

Heating: Forced Air

Roof: Composition

Construction Materials: Wood Siding

Sewer: Public

Stories: 2

Basement: Other

Amenities & Features

Laundry Features: Common Area, In Unit

Association Amenities: Pets Allowed, Storage, Boat Launch

Waterfront Features: Lake

Cooling: Central Air

Flooring: Vinyl

Parking Features: Carport

Appliances: Dishwasher, Dryer, Range, Refrigerator, Washer

Fees & Taxes

Tax Assessed Value: \$86,730

Association Fee: \$250

Tax Annual Amount: \$916

Association Fee Frequency: Monthly

Tax Year: 2024

Association Fee Includes: Water, Trash, Snow Removal, Lawn/Yard Care

Call us now



School Information

High School District: Edwardsburg

Miscellaneous

CrossStreet: Lisa Terrace and END

Listing Terms: Cash, Conventional

Call us now



Phone: (231)730-8781
Email: tuckerbennerteam@gmail.com
Address: 2747 Lakeshore Drive, Twin Lake, MI 49457

