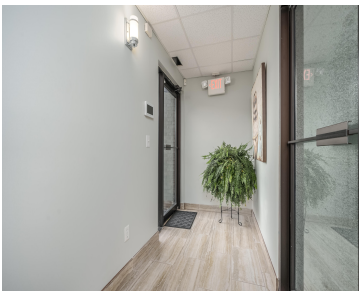


PORTAGE, MI, 49002

https://tuckerbenner.com



Great location with lots of possibilities. Property is currently used as a counseling center and was previously a tele-health center. Great location next to Trestlewood Pediatrics at Lovers Lane and Kilgore. Enjoy serene views of the Portage Creek and out your door access to the Portage Bike Trail. Unit has four office spaces, a lobby, [...]

- 2 baths
- Office
- Commercial Sale
- Active

Basics

Call us now

Category: Commercial Sale

Status: Active

Lot size: 0.71 sq ft

Subdivision Name: Trestlewood Office Condominiums

Lot Size Acres: 0.71 acres

County: Kalamazoo

Type: Office

Bathrooms: 2 baths

Year built: 1982

Bathrooms Full: 2

Business Type: Professional/Office, Professional Service, Storage, Institutional

Building Details

Building Area Total: 1936 sq ft

Construction Materials: Wood Siding, Brick

StoriesTotal: 1

Roof: Composition

Number Of Buildings: 1

Number Of Units Total: 1

Heating: Forced Air

Building Features: Security System

Foundation Details: Slab

Amenities & Features

Inclusions: Non-Applicable

Waterfront Features: Stream Creek

Cooling: Central Air

Utilities: Phone Available, Natural Gas Available, Electricity Available, Cable Available, Phone Connected, Natural Gas Connected, Electricity Connected, Cable Connected, Storm Sewer

Interior Features: Broadband

Fees & Taxes

Tax Assessed Value: \$107,800

Tax Annual Amount: \$6,815.40

Tax Year: 2024

Call us now

School Information

High School District: Portage

Miscellaneous

Road Surface Type: Paved

CrossStreet: Kilgore and I-94

Listing Terms: Conventional, Purchase Money Mtg, Cash

Call us now