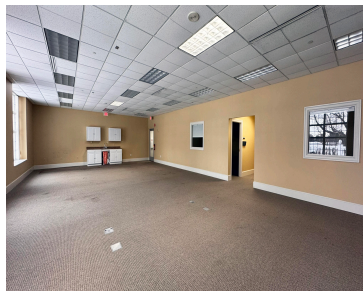
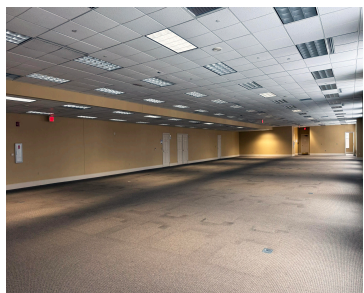


# 6938, ELM VALLEY, KALAMAZOO, MI, 49009

<https://tuckerbenner.com>



**\$11.95**



AVAILABLE FOR LEASE: Up to 40,000 RSF of office space at The Groves business park on Kalamazoo’s southwest side. This 167,253 SF, 2-story office/industrial building offers 2 office-specific entry points, common-area lobby/reception desk, restrooms, and large passenger elevator, 300+ parking spaces, monument signage, and easy access to I-94 and US-131. Tenant amenities include on-site property [...]

- 0 baths
- Office
- Commercial Lease
- Active



## Basics

**Category:** Commercial Lease  
**Status:** Active  
**Lot size:** 27.5 sq ft  
**Lot Size Acres:** 27.5 acres  
**County:** Kalamazoo

**Type:** Office  
**Bathrooms:** 0 baths  
**Year built:** 1999  
**Business Type:** Professional/Office, Institutional



### Call us now

Phone: (231)730-8781  
 Email: [tuckerbennerteam@gmail.com](mailto:tuckerbennerteam@gmail.com)  
 Address: 2747 Lakeshore Drive, Twin Lake, MI 49457



---

## Building Details

**Building Area Total:** 167253 sq ft

**Sewer:** Public Sewer

**Building Features:** Bath Common Area, Multi User Area

**Number Of Buildings:** 4

**Construction Materials:** Brick

**Heating:** Forced Air

**Roof:** Composition

---

## Amenities & Features

**Parking Total:** 369

**Utilities:** Phone Available, Natural Gas Available, Electricity Available, Cable Available, Phone Connected, Natural Gas Connected, Electricity Connected, Cable Connected, Water Available, Sewer Available, Storm Sewer, Broadband

**Parking Features:**  
Asphalt, Driveway, Paved

**WaterSource:** Public

**Fireplaces Total:** 4

**Cooling:** Central Air

---

## Fees & Taxes

**Tax Assessed Value:** \$2,100,000

**Tax Year:** 2024

---

## School Information

**High School District:** Kalamazoo

---

## Miscellaneous

**Road Surface Type:** Paved

**CrossStreet:** 9th Street & West O Avenue

**Tenant Pays:** Electricity, Water, Sewer, Gas



### Call us now

Phone: (231)730-8781

Email: tuckerbennerteam@gmail.com

Address: 2747 Lakeshore Drive, Twin Lake, MI 49457

