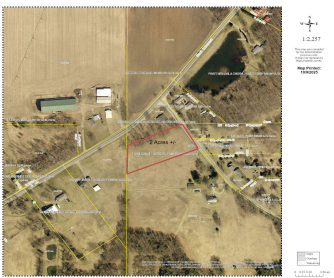


694, PIERCE, PLAINWELL, MI, 49080  
https://tuckerbenner.com



Dynamite buildable acreage offered here on this 2+ acres that perc tested with sand and ready to build, NO HOA. Paved public road with natural gas. Brand new land division subject to township final approval. Bring your own builder or we'll appoint you one. This land is relatively flat with a little roll to it [...]

- 0 baths
- Acreage
- Land
- Active



Call us now

---

# Basics

**Category:** Land

**Status:** Active

**Lot size:** 2 sq ft

**County:** Allegan

**Type:** Acreage

**Bathrooms:** 0 baths

**Lot Size Acres:** 2 acres

---

# Amenities & Features

**Utilities:** Natural Gas Available, Electricity Available, Cable Available, Phone Available, None

**Lot Features:** Level, Rolling Hills, Buildable, Cleared

---

# Fees & Taxes

**Tax Assessed Value:** \$1

**Tax Annual Amount:** \$1

**Tax Year:** 2025

---

# School Information

**High School District:** Plainwell

---

# Miscellaneous

**Road Surface Type:** Paved

**CrossStreet:** Pierce Rd. and Marsh Rd.

**Listing Terms:** Cash, Build to Suit, Conventional

## Call us now