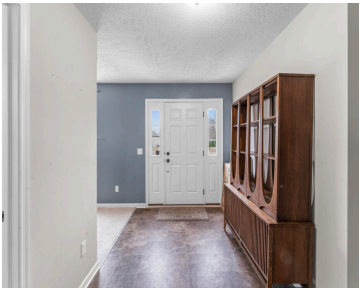


700, BROOKE, BLISSFIELD, MI, 49228

https://tuckerbenner.com



Quiet Country Living at its Best! This Contemporary 2-Story is Nestled in a Cozy Cul-De-Sac In Highly-Desired West Brooke Sub! Open Floor Plan boasts Gourmet Kitchen with Espresso Cabinets, Granite Counters, Coffee Bar, Walk-in Pantry and Giant Island with Snack Bar and Stainless Steel Appliances! Continuing to the Breakfast Nook and Great Room with Vaulted [...]

- 3 beds
- 4 baths
- Single Family Residence
- Residential
- Active
- 2168 sq ft



Basics

Category: Residential	Type: Single Family Residence
Status: Active	Bedrooms: 3 beds
Bathrooms: 4 baths	Area: 2168 sq ft
Lot size: 0.24 sq ft	Year built: 2016
Bathrooms Full: 2	Lot Size Acres: 0.24 acres
Rooms Total: 3	County: Lenawee
Bathrooms Half: 2	

Building Details

Building Area Total: 2168 sq ft	Construction Materials: Brick, Vinyl Siding
Architectural Style: Colonial	Sewer: Public
Heating: Forced Air	Stories: 2
Roof: Shingle	Basement: Full

Amenities & Features

Laundry Features: Main Level	Fencing: Fenced Back
Parking Features: Attached	Garage Spaces: 2
WaterSource: Public	Appliances: Dishwasher, Microwave, Oven, Refrigerator
Window Features: Skylight(s)	Patio And Porch Features: Patio
Fireplaces Total: 1	Cooling: Central Air

Fees & Taxes

Tax Assessed Value: \$147,735	Tax Year: 2024
Tax Annual Amount: \$3,836	

Call us now

School Information

High School District: Blissfield

Miscellaneous

CrossStreet: W Adrian St and W Brooke Ln **Listing Terms:** Cash, FHA, VA Loan, Conventional

Call us now