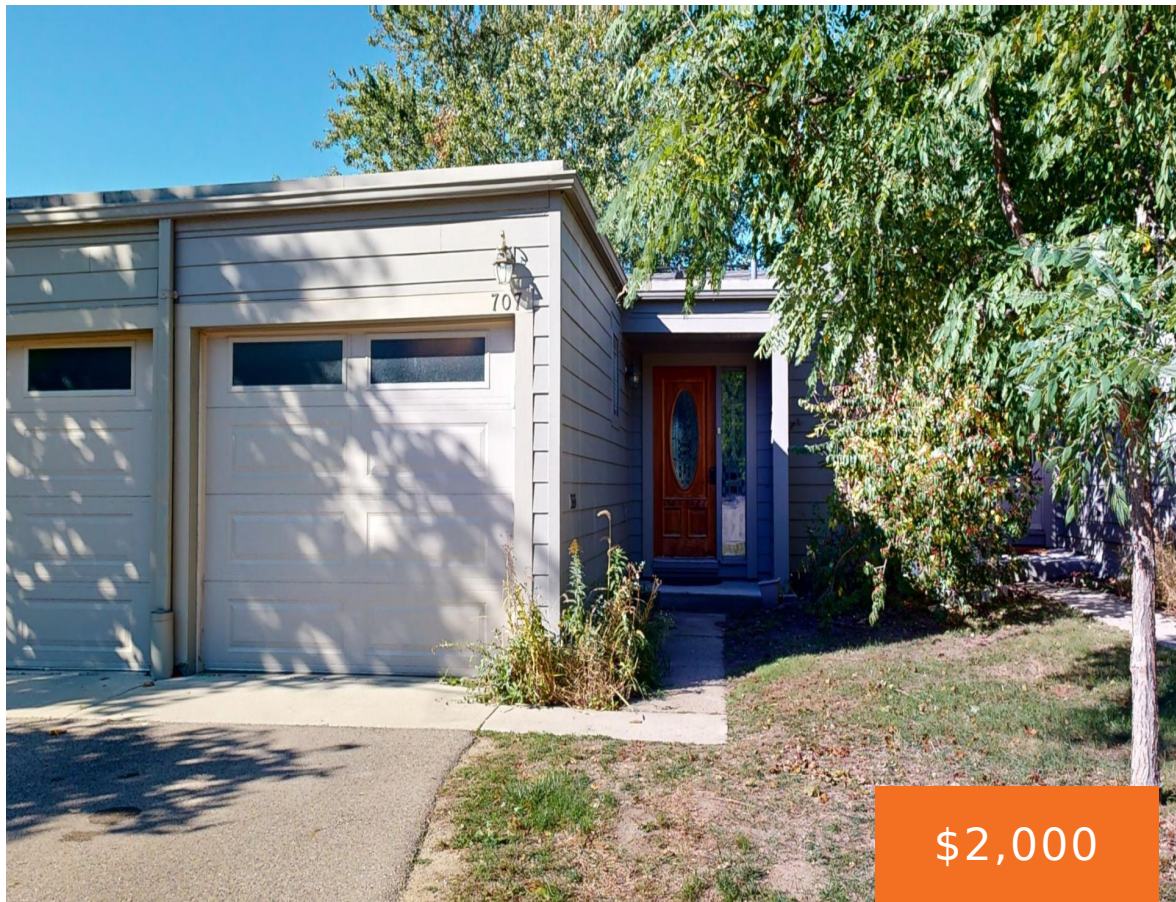


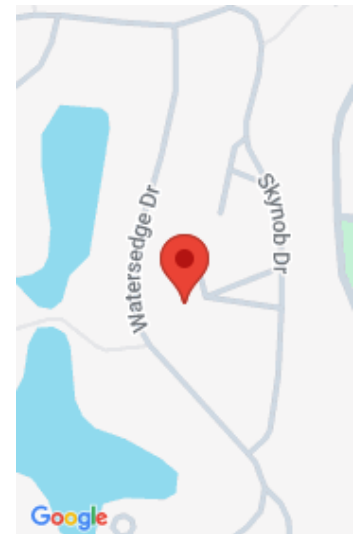
707, SKYNOB, ANN ARBOR, MI, 48105

https://tuckerbenner.com



Geddes Lake 2-BR 2(1 1)-BA townhome! No carpeting in the entire home. The entry level has a nicely finished kitchen, a large living and dining space, a powder room, a 12’ door-wall leading to a nicely sized balcony perfect for relaxing and/or entertaining. The lower level has two good sized bedrooms, a full bathroom and [...]

- 2 beds
- 2 baths
- Condominium
- Residential Lease
- Active
- 1260 sq ft



Basics

Category: Residential Lease
Status: Active
Bathrooms: 2 baths
Year built: 1976
Bathrooms Full: 1
County: Washtenaw

Type: Condominium
Bedrooms: 2 beds
Area: 1260 sq ft
Subdivision Name: Geddes Lake
Lot Size Acres: 0 acres
Bathrooms Half: 1

Building Details

Heating: Forced Air

Amenities & Features

Laundry Features: Lower Level
Parking Features: Garage Faces Front, Garage Door Opener, Attached
Garage Spaces: 1
Patio And Porch Features: Patio
Cooling: Central Air

School Information

High School District: Ann Arbor
HighSchool: Huron High School
Middle Or Junior School: Clague Middle School
Elementary School: Martin Luther King Elementary School

Miscellaneous

Call us now

 Phone: (231)730-8781
Email: tuckerbennerteam@gmail.com
Address: 2747 Lakeshore Drive, Twin Lake, MI 49457



CrossStreet: S Huron Pkwy and Lakehaven

Owner Pays: Association Fees,
Lawn/Yard Care, Trash, Sewer, Snow
Removal, Taxes, Water

Tenant Pays: A/C, Cable/Satellite, Electric, Heat,
Housekeeping, Internet Access, Linens, Phone, WIFI

Call us now



Phone: (231)730-8781
Email: tuckerbennerteam@gmail.com
Address: 2747 Lakeshore Drive, Twin Lake, MI 49457

