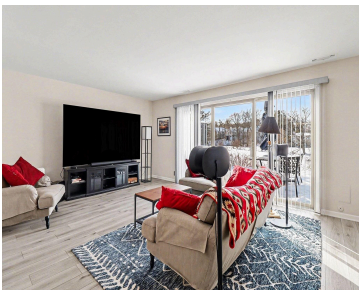
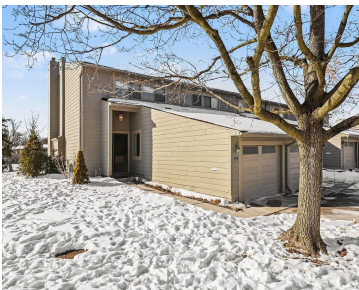


719, WATERSEdge, ANN ARBOR, MI, 48105

<https://tuckerbenner.com>

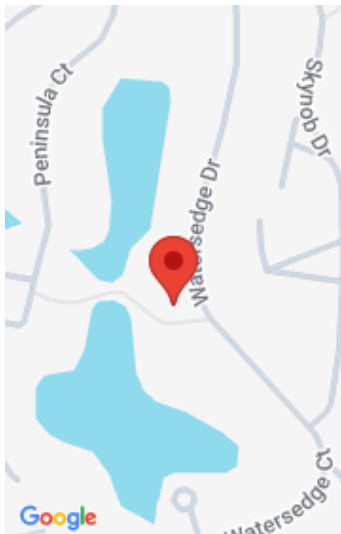


\$375,000



Experience the pinnacle of Geddes Lake living in this premium end-unit, where privacy meets panoramic views. This home is positioned perfectly to offer a rare sense of seclusion and a front-row seat to nature. Step onto your private deck with panoramic views of the pond; a perfect spot to relax with a favorite beverage or [...]

- 3 beds
- 3 baths
- Condominium
- Residential
- Active
- 1516 sq ft



Call us now



Phone: (231)730-8781

Email: tuckerbennerteam@gmail.com

Address: 2747 Lakeshore Drive, Twin Lake, MI 49457



Basics

Category: Residential	Type: Condominium
Status: Active	Bedrooms: 3 beds
Bathrooms: 3 baths	Area: 1516 sq ft
Year built: 1976	Subdivision Name: Geddes Lake
Bathrooms Full: 2	Lot Size Acres: 0 acres
Rooms Total: 9	County: Washtenaw
Bathrooms Half: 1	

Building Details

Building Area Total: 1516 sq ft	Construction Materials: Other
Architectural Style: Contemporary	Sewer: Public
Heating: Forced Air	Stories: 2
Basement: Slab	

Amenities & Features

Laundry Features: Main Level	Flooring: Carpet, Tile, Vinyl
Association Amenities: Clubhouse, End Unit, Fitness Center, Meeting Room, Playground, Pool, Tennis Court(s), Trail(s)	Parking Features: Garage Door Opener, Attached
Waterfront Features: Pond	Garage Spaces: 1
WaterSource: Public	Appliances: Dishwasher, Disposal, Dryer, Microwave, Oven, Range, Refrigerator, Washer
Interior Features: Garage Door Opener	Window Features: Window Treatments
Patio And Porch Features: Deck, Porch(es)	Cooling: Central Air

Fees & Taxes

Call us now



Tax Assessed Value: \$159,186

Association Fee: \$574

Tax Annual Amount: \$8,467

Association Fee Frequency: Monthly

Tax Year: 2025

Association Fee Includes: Water, Trash, Sewer, Lawn/Yard Care

School Information

High School District: Ann Arbor

Middle Or Junior School: Clague Middle School

HighSchool: Huron High School

Elementary School: King Elementary

Miscellaneous

CrossStreet: Huron Parkway and Lakehaven

Listing Terms: Cash, Conventional

Call us now



Phone: (231)730-8781

Email: tuckerbennerteam@gmail.com

Address: 2747 Lakeshore Drive, Twin Lake, MI 49457

