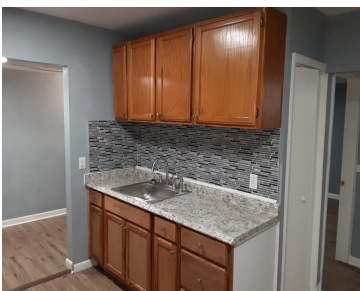


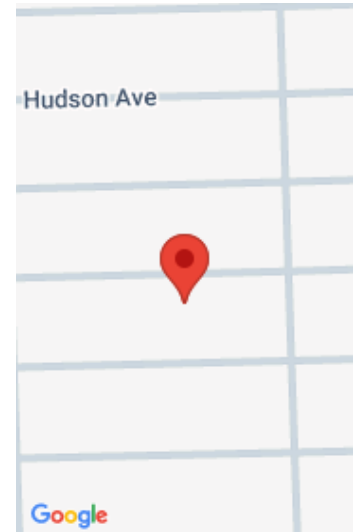
7228, CHALMERS, WARREN, MI, 48091

https://tuckerbenner.com



Welcome to this charming 2-bedroom lower flat, ideally situated just minutes from Groesbeck and Weigand Parks! You'll also find plenty of convenient amenities nearby, like White Castle and Chase Bank on 8 Mile, Walgreens and McDonald's on 9 Mile, and The Vary Fine Food Mart just a couple of blocks away on Van Dyke. As [...]

- 2 beds
- 1 bath
- Duplex
- Residential Lease
- Active
- 939 sq ft



Basics

Category: Residential Lease
Status: Active
Bathrooms: 1 bath
Lot size: 0.1 sq ft
Bathrooms Full: 1
Rooms Total: 4

Type: Duplex
Bedrooms: 2 beds
Area: 939 sq ft
Year built: 1946
Lot Size Acres: 0.1 acres
County: Macomb

Building Details

Heating: Forced Air
Basement: Slab

School Information

High School District: Van Dyke

Miscellaneous

CrossStreet: 9 blks S 9 Mile, 2 blk Van Dyk

Call us now