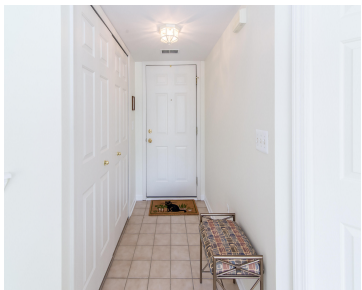


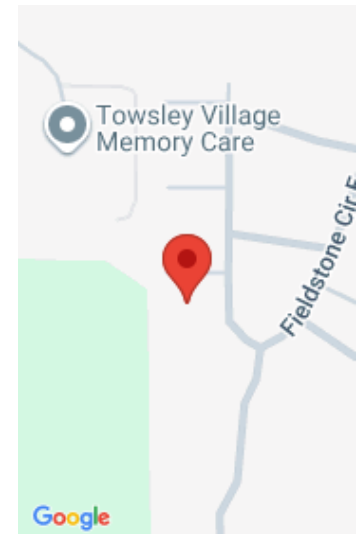
728, COBBLESTONE, CHELSEA, MI, 48118

<https://tuckerbenner.com>



Welcome to easy, one floor living in the heart of Chelsea! This beautifully maintained 2 bedroom, 2 bath first floor ranch condo offers a serene setting backing to a private wooded area-perfect for those seeking comfort, privacy, and convenience. Ideally located just down the street from the Chelsea Community Fairgrounds and within walking distance to [...]

- 2 beds
- 2 baths
- Condominium
- Residential
- Active
- 1486 sq ft



Basics

Category: Residential

Status: Active

Bathrooms: 2 baths

Lot size: 0.04 sq ft

Subdivision Name: Fieldstone Village

Lot Size Acres: 0.04 acres

County: Washtenaw

Type: Condominium

Bedrooms: 2 beds

Area: 1486 sq ft

Year built: 2002

Bathrooms Full: 2

Rooms Total: 6

Building Details

Building Area Total: 1486 sq ft

Architectural Style: Ranch

Heating: Forced Air

Roof: Asphalt, Shingle

Construction Materials: Vinyl Siding

Sewer: Public

Stories: 1

Basement: Slab

Amenities & Features

Laundry Features: In Unit, Laundry Room, Main Level

Flooring: Carpet, Ceramic Tile, Vinyl

Parking Features: Attached

WaterSource: Public

Interior Features: Pantry

Patio And Porch Features: Patio

Pool Features: Indoor

Association Amenities: Pool

Garage Spaces: 1

Appliances: Dishwasher, Disposal, Dryer, Microwave, Range, Refrigerator, Washer

Lot Features: Wooded

Cooling: Central Air

Fees & Taxes

Call us now



Tax Assessed Value: \$65,337

Association Fee: \$320

Tax Annual Amount: \$3,162

Association Fee Frequency: Monthly

Tax Year: 2025

Association Fee Includes: Water, Trash, Snow Removal,
Lawn/Yard Care

School Information

High School District: Chelsea

HighSchool: Chelsea High School

Miscellaneous

CrossStreet: Old US Hwy 12 & Fieldstone

Listing Terms: Cash, Conventional

Call us now