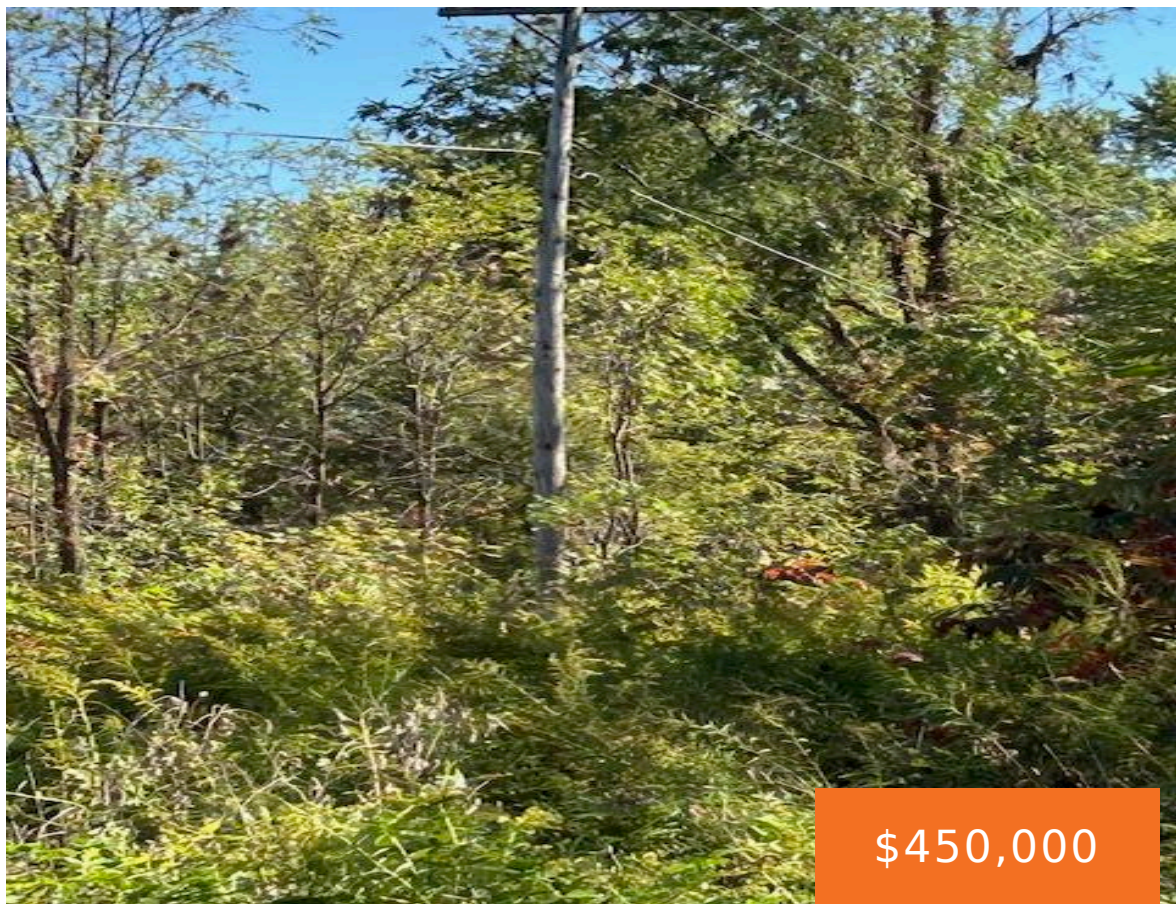


7300, PONTIAC, SOUTH LYON, MI, 48178

https://tuckerbenner.com



Live/Work opportunity in South Lyon! Property includes a commercial building and a 2-bedroom, 2-bath home on 1.16 acres. Ideal for small business owners or investors seeking mixed use potential. There is endless potential for business and residential use in one location. This property is situated near downtown South Lyon where shopping and major highways are [...]

- 1 bath
- Business
- Commercial Sale
- Active



Basics

Category: Commercial Sale

Status: Active

Lot size: 1.16 sq ft

Bathrooms Full: 1

Business Type: Other, Professional/Office, Professional Service

Type: Business

Bathrooms: 1 bath

Year built: 1840

Lot Size Acres: 1.16 acres

County: Washtenaw

Building Details

Building Area Total: 1559 sq ft

Construction Materials: Aluminum Siding, Vinyl Siding

Heating: Forced Air

Foundation Details: Slab

Number Of Units Total: 1

Sewer: Septic Tank

StoriesTotal: 1559

Number Of Buildings: 2

Amenities & Features

Inclusions: Real Estate

Utilities: Phone Available, Electricity Available, Cable Available, Phone Connected, Electricity Connected, Cable Connected, Propane

WaterSource: Well

Interior Features: Broadband

Cooling: Window Unit(s)

Fees & Taxes

Tax Assessed Value: \$93,483

Tax Year: 2025

Tax Annual Amount: \$4,250

School Information

Call us now

High School District: South Lyon

Miscellaneous

Road Surface Type: Paved

CrossStreet: Five Mile

Listing Terms: Conventional, Contract, Cash

Call us now