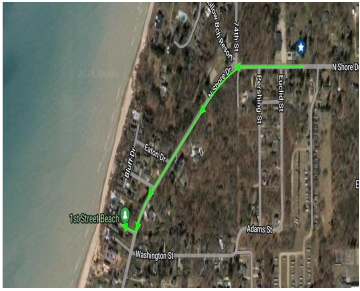


7363, NORTH SHORE, SOUTH HAVEN, MI, 49090

<https://tuckerbenner.com>



\$189,900



Welcome to North Shore Club, your charming 2 bedroom, 2 bath condo that is 1/2 mile from Lake Michigan! A short ride to Downtown South Haven and the Kal-Haven Trail too. Easily accessible ground floor unit with an updated kitchen, fresh paint, newer windows and new carpet. Amenities include a private pool, tennis courts and [...]

- 2 beds
- 4 baths
- Condominium
- Residential
- Active
- 1148 sq ft



Basics



Call us now

Phone: (231)730-8781
 Email: tuckerbennerteam@gmail.com
 Address: 2747 Lakeshore Drive, Twin Lake, MI 49457



Category: Residential

Status: Active

Bathrooms: 4 baths

Lot size: 0 sq ft

Bathrooms Full: 2

Rooms Total: 4

Bathrooms Half: 2

Type: Condominium

Bedrooms: 2 beds

Area: 1148 sq ft

Year built: 1980

Lot Size Acres: 0 acres

County: Allegan

Building Details

Building Area Total: 1148 sq ft

Architectural Style: Other

Heating: Baseboard, Hot Water

Common Walls: End Unit

Construction Materials: Stucco

Sewer: Public Sewer

Stories: 1

Basement: Slab

Amenities & Features

Laundry Features: Gas Dryer Hookup, In Unit, Main Level, Washer Hookup

Utilities: Public Water, Public Sewer, Natural Gas Available, Electricity Available, Natural Gas Connected, Cable Connected, High-Speed Internet

Waterfront Features: Lake

Appliances: Oven, Range, Refrigerator

Lot Features: Wooded

Exterior Features: Tennis Court(s)

Pool Features: Outdoor/Inground

Association Amenities: Pets Allowed, Tennis Court(s), Pool

WaterSource: Public

Interior Features: Pantry

Window Features: Screens

Fees & Taxes



Call us now

Phone: (231)730-8781

Email: tuckerbennerteam@gmail.com

Address: 2747 Lakeshore Drive, Twin Lake, MI 49457



Tax Assessed Value: \$27,342 **Association Fee Frequency:** Monthly

Association Fee: \$340

Tax Year: 2024

Tax Annual Amount: \$1,031

Association Fee Includes: Water, Trash, Snow Removal, Sewer, Lawn/Yard Care

School Information

High School District: South Haven

HighSchool: South Haven High School

Middle Or Junior School: Baseline Middle School

Elementary School: North Shore Elementary

Miscellaneous

Road Surface Type: Paved

CrossStreet: Blue Star Hwy

Listing Terms: Cash, Conventional



Call us now

Phone: (231)730-8781

Email: tuckerbennerteam@gmail.com

Address: 2747 Lakeshore Drive, Twin Lake, MI 49457

