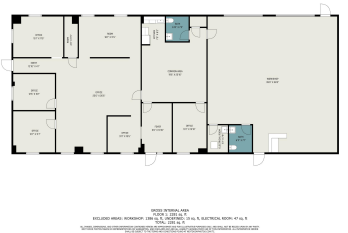


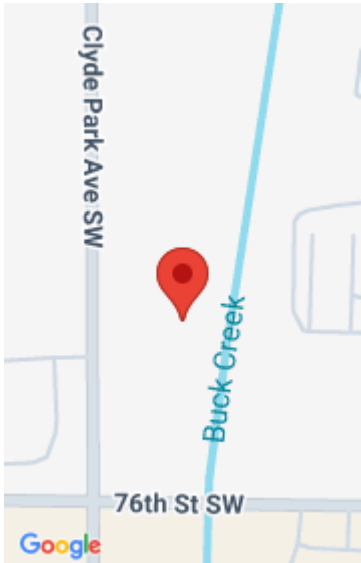
# 7532, CLYDE PARK, BYRON CENTER, MI, 49315

<https://tuckerbenner.com>



Less than 1 mile from the 131 exchange with easy on and off access, this high traffic building has the crossroads at 76th and Clyde Park. Built in 2019, this 4160 sq. ft. building has 3 suites, with 3 private offices, a waiting room, receptionist space, conference room, open concept office collaboration, shared kitchen, and [...]

- 2 baths
- Industrial
- Commercial Sale
- Active



## Call us now

# Basics

**Category:** Commercial Sale

**Status:** Active

**Lot size:** 2.33 sq ft

**Bathrooms Full:** 2

**Business Type:** Auto Service, Professional/Office, Distribution, Storage, Manufacturing

**Type:** Industrial

**Bathrooms:** 2 baths

**Year built:** 2019

**Lot Size Acres:** 2.33 acres

**County:** Kent

# Building Details

**Building Area Total:** 4160 sq ft

**Construction Materials:** Metal Siding

**StoriesTotal:** 1

**Roof:** Metal

**Number Of Buildings:** 2

**Number Of Units Total:** 3

**Heating:** Forced Air

**Building Features:** Bath Common Area

**Foundation Details:** Slab, Concrete Perimeter

# Amenities & Features

**Parking Total:** 12

**Utilities:** Phone Available, Natural Gas Available, Electricity Available, Cable Available, Phone Connected, Natural Gas Connected, Electricity Connected, Cable Connected, Storm Sewer

**Interior Features:** Broadband

**Inclusions:** Real Estate

**Waterfront Features:** Stream Creek

**Cooling:** Central Air

# Fees & Taxes

**Tax Assessed Value:** \$320,470

**Tax Annual Amount:** \$14,951

**Tax Year:** 2024

Call us now

---

# School Information

**High School District:** Byron Center

---

# Miscellaneous

**CrossStreet:** Clyde Park and 76th

**Listing Terms:** Conventional, Contract, Cash

**Call us now**