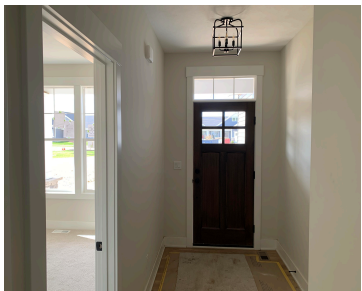


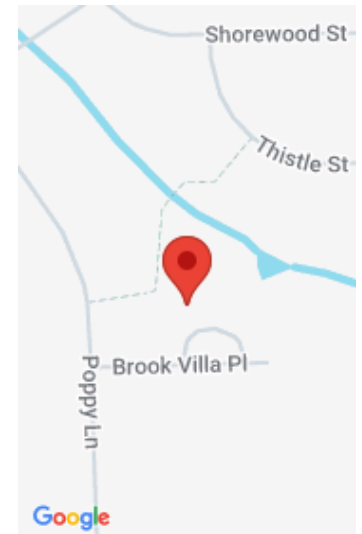
7585, BROOK VILLA, ALLENDALE, MI, 49401

https://tuckerbenner.com



New Construction and Almost Complete. JTB Homes presents this "Encore" condo in Water's Edge South. Enjoy extras throughout, like the Michigan Room with cathedral ceiling, 12×12 deck with stairs to grade, and gas log fireplace in the living room. The kitchen features a center island, spacious eating area, walk-in pantry, and upgrades like solid surface [...]

- 3 beds
- 3 baths
- Condominium
- Residential
- Active
- 2219 sq ft



Call us now

Phone: (231)730-8781  
Email: tuckerbennerteam@gmail.com  
Address: 2747 Lakeshore Drive, Twin Lake, MI 49457

# Basics

**Category:** Residential

**Status:** Active

**Bathrooms:** 3 baths

**Lot size:** 0 sq ft

**Subdivision Name:** Waters Edge South

**Lot Size Acres:** 0 acres

**County:** Ottawa

**Type:** Condominium

**Bedrooms:** 3 beds

**Area:** 2219 sq ft

**Year built:** 2025

**Bathrooms Full:** 3

**Rooms Total:** 12

# Building Details

**Building Area Total:** 1628 sq ft

**Construction Materials:** Stone, Vinyl Siding

**Architectural Style:** Ranch

**Sewer:** Public

**Heating:** Forced Air

**Stories:** 1

**Roof:** Asphalt, Fiberglass

**Basement:** Daylight

# Amenities & Features

**Laundry Features:** Gas Dryer Hookup, Laundry Room, Main Level, Washer Hookup

**Utilities:** Phone Available, Cable Available, Natural Gas Connected

**Parking Features:** Garage Faces Front, Garage Door Opener, Attached

**Garage Spaces:** 2

**Appliances:** Humidifier, Dishwasher, Disposal, Microwave, Range, Refrigerator

**Lot Features:** Sidewalk

**Patio And Porch Features:** Deck

**Cooling:** Central Air, SEER 13 or Greater

**Flooring:** Carpet, Laminate, Vinyl

**Association Amenities:** End Unit, Pets Allowed

**Fireplace Features:** Gas Log, Living Room

**WaterSource:** Public

**Interior Features:** Ceiling Fan(s), Broadband, Garage Door Opener, Center Island, Eat-in Kitchen, Pantry

**Window Features:** Low-Emissivity Windows, Screens, Insulated Windows, Garden Window

**Fireplaces Total:** 1

Call us now

## Fees & Taxes

**Tax Assessed Value:** \$3,232

**Association Fee:** \$220

**Association Fee Includes:** Water, Trash, Snow Removal,  
Sewer, Lawn/Yard Care

**Association Fee Frequency:**  
Monthly

**Tax Year:** 2024

## School Information

**High School District:** Allendale

## Miscellaneous

**Road Surface Type:** Paved

**CrossStreet:** 78th Ave and Hawkin

**Listing Terms:** Cash, Conventional

**Call us now**