

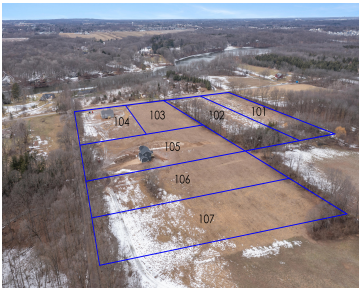
7769, 96TH, ALTO, MI, 49302

<https://tuckerbenner.com>

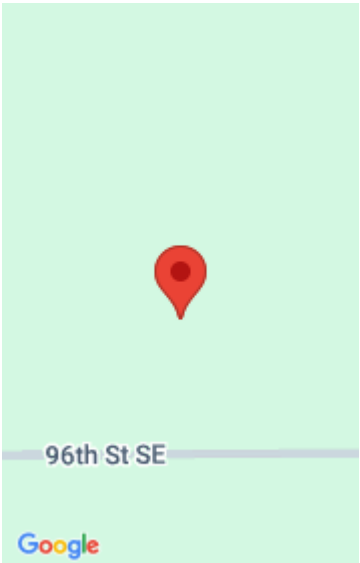


\$195,000

Here’s your chance to build your dream home on this large, private lot on Alaska Avenue in the Caledonia School District. Features 2.65 acres near the Thornapple River and situated on a quiet side street. This is for LOT 107 of the picture in the listing. Please reach out to discuss build options. Build with [...]



- 0 baths
- Acreage
- Land
- Active



Call us now



Phone: (231)730-8781
Email: tuckerbennerteam@gmail.com
Address: 2747 Lakeshore Drive, Twin Lake, MI 49457



Basics

Category: Land

Status: Active

Lot size: 2.65 sq ft

Lot Size Acres: 2.65 acres

Type: Acreage

Bathrooms: 0 baths

Subdivision Name: Alaska Avenue

County: Kent

Amenities & Features

Utilities: Natural Gas Available, Electricity Available, Cable Available, Phone Available, None

Fees & Taxes

Tax Assessed Value: \$40,000

Tax Year: 2025

School Information

High School District: Caledonia

Miscellaneous

CrossStreet: Alaska Ave & Whitneyville

Listing Terms: Cash, Conventional

Call us now