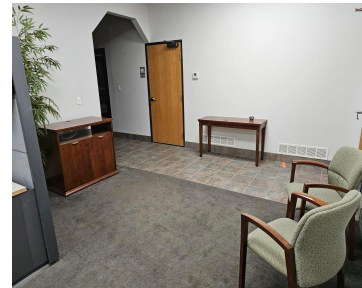
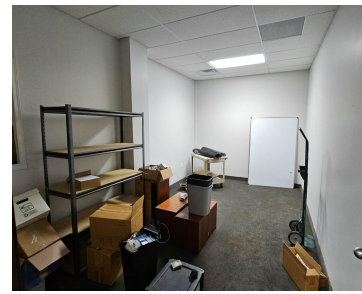


7954, LILLEY, CANTON, MI, 48187

<https://tuckerbenner.com>



Discover this well-appointed commercial space available for rent in Canton, perfectly suited for professional office use. The layout features a welcoming reception area, multiple private offices, and a functional conference room ideal for team meetings. Employees will appreciate the convenience of private restrooms and a kitchen area for breaks. The space includes established work stations [...]

- 2 baths
- Office
- Commercial Sale
- Active



Basics

Category: Commercial Sale

Status: Active

Lot size: 0 sq ft

Bathrooms Full: 2

Business Type: Professional/Office

Type: Office

Bathrooms: 2 baths

Year built: 2002

Lot Size Acres: 0 acres

County: Wayne



Call us now

Phone: (231)730-8781

Email: tuckerbennerteam@gmail.com

Address: 2747 Lakeshore Drive, Twin Lake, MI 49457



Building Details

Building Area Total: 2207 sq ft

Heating: Forced Air

Foundation Details: Slab

Construction Materials: Other

StoriesTotal: 2052

Number Of Buildings: 1

Amenities & Features

Inclusions: Non-Applicable **Utilities:** Phone Available, Electricity Available, Cable Available, Electricity Connected

Cooling: Central Air

Fees & Taxes

Tax Assessed Value: \$85,643

Tax Year: 2024

School Information

High School District: Plymouth-Canton

Miscellaneous

Road Surface Type: Paved

CrossStreet: N Lilley Rd

Listing Terms: Conventional, Cash



Call us now

Phone: (231)730-8781

Email: tuckerbennerteam@gmail.com

Address: 2747 Lakeshore Drive, Twin Lake, MI 49457

