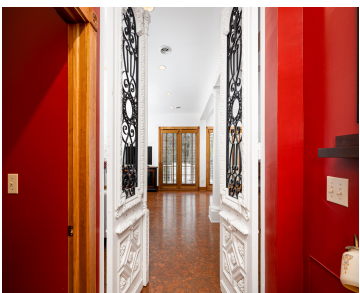
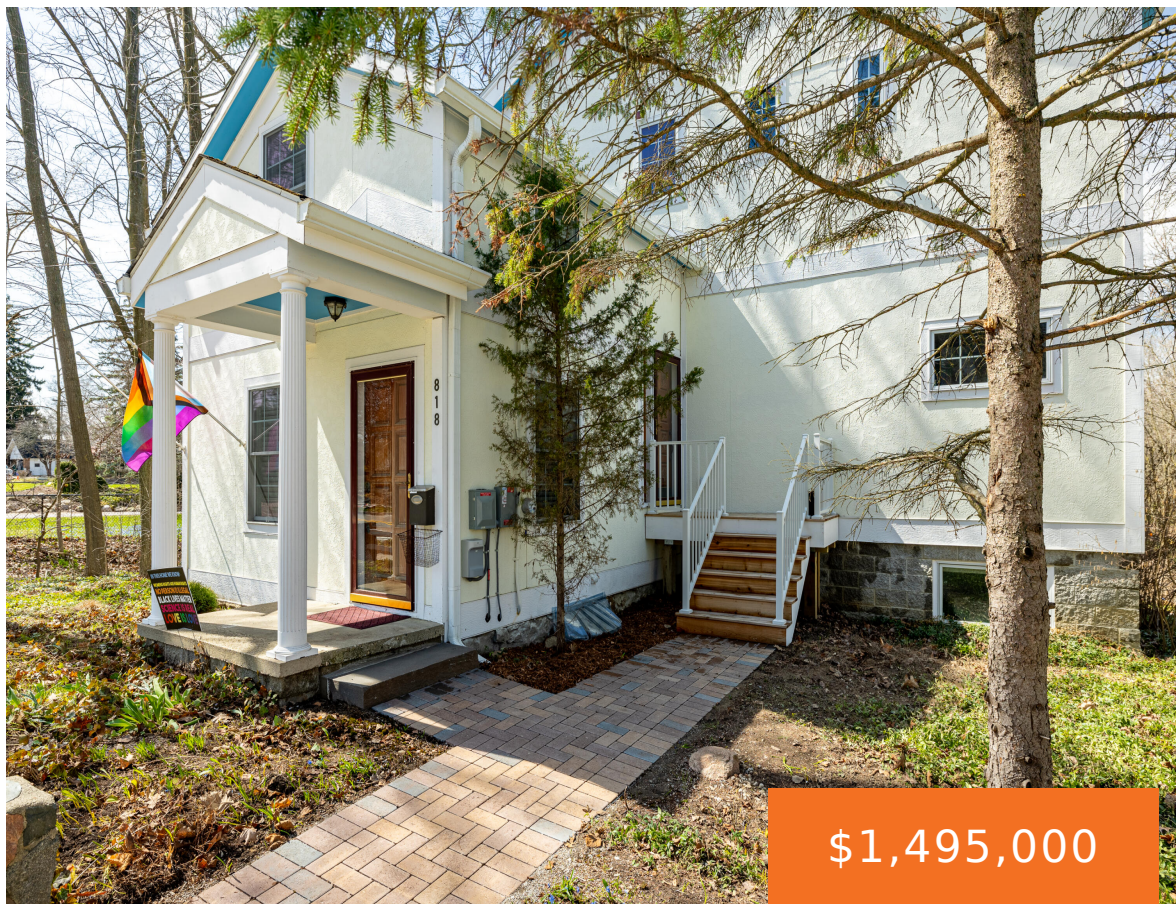


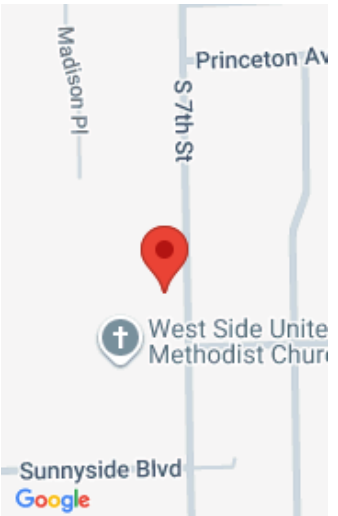
818, 7TH, ANN ARBOR, MI, 48103

https://tuckerbenner.com



Welcome to this one of a kind home, neighboring the Old West Side Historic District of Ann Arbor. The original 19th century farmhouse is now a 3 story featuring 5 bedrooms, 5 bathrooms and a lower level walkout suite leading to a spacious secluded garden area. Classic west side elegance and charm blend seamlessly with [...]

- 4 beds
- 5 baths
- Single Family Residence
- Residential
- Active
- 4027 sq ft



Call us now

Phone: (231)730-8781
Email: tuckerbennerteam@gmail.com
Address: 2747 Lakeshore Drive, Twin Lake, MI 49457

Basics

Category: Residential

Status: Active

Bathrooms: 5 baths

Lot size: 0.33 sq ft

Bathrooms Full: 3

Rooms Total: 10

Bathrooms Half: 2

Type: Single Family Residence

Bedrooms: 4 beds

Area: 4027 sq ft

Year built: 1901

Lot Size Acres: 0.33 acres

County: Washtenaw

Building Details

Building Area Total: 2930 sq ft

Architectural Style: Farmhouse, Historic, Mid-Century Modern

Heating: Baseboard, Hot Water, Radiant

Roof: Shingle

Construction Materials: Block, Concrete, HardiPlank Type, Other

Sewer: Public

Stories: 3

Basement: Walk-Out Access

Amenities & Features

Call us now

Laundry Features: Gas Dryer Hookup, Laundry Room, Lower Level, Sink, Washer Hookup

Utilities: Natural Gas Available, Electricity Available, Cable Available, Natural Gas Connected, High-Speed Internet

WaterSource: Public

Interior Features: Ceiling Fan(s), Broadband, Guest Quarters, Pantry

Window Features: Insulated Windows, Window Treatments

Exterior Features: Balcony

Cooling: Central Air

Flooring: Stone, Tile

Fireplace Features: Gas/Wood Stove, Bath, Living Room

Appliances: Built-In Electric Oven, Built-In Gas Oven, Cooktop, Dishwasher, Disposal, Double Oven, Dryer, Freezer, Microwave, Oven, Range, Refrigerator, Washer

Lot Features: Sidewalk

Patio And Porch Features: Patio

Fireplaces Total: 2

Fees & Taxes

Tax Assessed Value: \$198,424

Tax Year: 2024

Tax Annual Amount: \$10,629.07

School Information

High School District: Ann Arbor

HighSchool: Pioneer High School

Middle Or Junior School: Slauson Middle School

Elementary School: Eberwhite Elementary School

Miscellaneous

Road Surface Type: Paved

CrossStreet: S 7th St. & W. Madison St.

Listing Terms: Cash, Conventional

Call us now