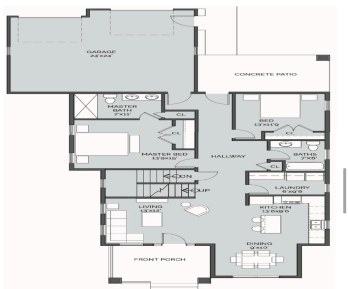
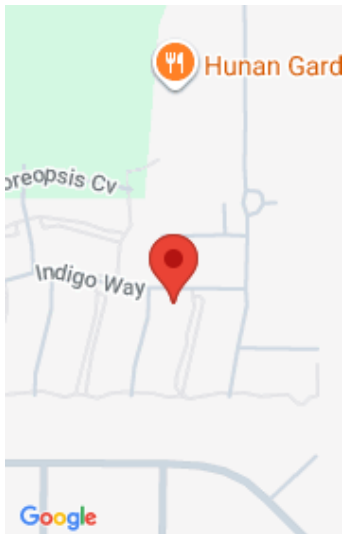


8183, CONEFLOWER, KALAMAZOO, MI, 49009
https://tuckerbenner.com



The Julia floor plan built by Visser is the perfect blend of luxury and practicality, with custom upgrades throughout. The open dining and great room feature large windows that fill the space with natural light, leading to a large patio ideal for outdoor entertaining. The spacious primary suite includes a custom tile shower and a [...]

- 2 beds
- 2 baths
- Condominium
- Residential
- Active
- 1354 sq ft



Call us now

Basics

Category: Residential
Status: Active
Bathrooms: 2 baths
Lot size: 0.15 sq ft
Subdivision Name: Belle Meade
Lot Size Acres: 0.15 acres
County: Kalamazoo

Type: Condominium
Bedrooms: 2 beds
Area: 1354 sq ft
Year built: 2025
Bathrooms Full: 2
Rooms Total: 7

Building Details

Building Area Total: 1354 sq ft
Construction Materials: HardiPlank Type, Stone
Architectural Style: Other
Sewer: Public Sewer
Heating: Forced Air
Stories: 1
Basement: Full

Amenities & Features

Laundry Features: Main Level
Association Amenities: Clubhouse, Pets Allowed, Pool, Other
Parking Features: Garage Door Opener, Attached
Garage Spaces: 2
WaterSource: Public
Appliances: Refrigerator, Range, Microwave, Dishwasher
Interior Features: Garage Door Opener, Kitchen Island
Lot Features: Level, Sidewalk, Site Condo
Window Features: Low-Emissivity Windows, Insulated Windows
Exterior Features: Porch(es)
Cooling: Central Air

Fees & Taxes

Call us now

Tax Assessed Value: \$28,240

Association Fee: \$1,074

Tax Annual Amount: \$1,566

Association Fee Frequency: Quarterly

Tax Year: 2024

Association Fee Includes: Other, Trash, Snow Removal,
Lawn/Yard Care

School Information

High School District: Mattawan

Miscellaneous

Road Surface Type: Paved

CrossStreet: Indigo Way and End

Listing Terms: Cash, Conventional

Call us now