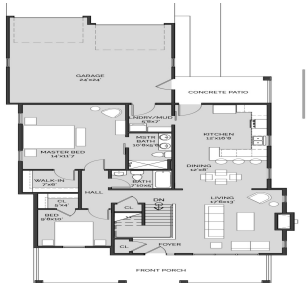


8217, SWITCH GRASS, KALAMAZOO, MI, 49009
https://tuckerbenner.com



- 2 beds
- 2 baths
- Condominium
- Residential
- Active
- 1293 sq ft



Call us now

Phone: (231)730-8781
Email: tuckerbennerteam@gmail.com
Address: 2747 Lakeshore Drive, Twin Lake, MI 49457

Basics

Category: Residential

Status: Active

Bathrooms: 2 baths

Lot size: 0.15 sq ft

Bathrooms Full: 2

Rooms Total: 8

Type: Condominium

Bedrooms: 2 beds

Area: 1293 sq ft

Year built: 2025

Lot Size Acres: 0.15 acres

County: Kalamazoo

Building Details

Building Area Total: 1293 sq ft

Construction Materials: HardiPlank Type, Stone

Architectural Style: Ranch

Sewer: Public Sewer

Heating: Forced Air

Stories: 1

Basement: Full

Amenities & Features

Laundry Features: Main Level

Association Amenities: Clubhouse, Pets Allowed, Pool, Other

Parking Features: Garage Door Opener, Attached

Garage Spaces: 2

WaterSource: Public

Appliances: Refrigerator, Range, Microwave, Dishwasher

Interior Features: Garage Door Opener, Eat-in Kitchen

Lot Features: Level, Sidewalk, Site Condo

Window Features: Low-Emissivity Windows, Insulated Windows

Exterior Features: Porch(es)

Cooling: Central Air

Fees & Taxes

Call us now

Tax Assessed Value: \$28,240

Association Fee Frequency: Quarterly

Association Fee: \$1,074

Tax Year: 2024

Tax Annual Amount: \$1,566

Association Fee Includes: Other, Trash, Snow Removal,
Lawn/Yard Care

School Information

High School District: Mattawan

Miscellaneous

Road Surface Type: Paved

CrossStreet: Indigo Way

Listing Terms: Cash, Conventional

Call us now