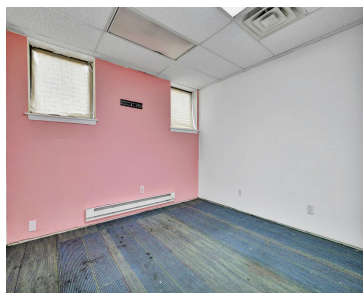


835, LOUISA, LANSING, MI, 48911

<https://tuckerbenner.com>



\$16.67



Introducing 835 Louisa St. Ste. 103E, Lansing, MI 48911 – Your Ideal Commercial Office Space for Rent! This spacious commercial suite offers two meticulously designed rooms, providing the perfect backdrop for your business endeavors. Boasting 216 square feet of functional space, this suite is ready to accommodate your professional needs. For just \$300 per month, [...]

- 0 baths
- Office
- Commercial Lease
- Active



Basics

Category: Commercial Lease
Status: Active
Lot size: 0.74 sq ft
Lot Size Acres: 0.74 acres
County: Ingham

Type: Office
Bathrooms: 0 baths
Year built: 1973
Business Type: Professional/Office



Call us now

Phone: (231)730-8781
 Email: tuckerbennerteam@gmail.com
 Address: 2747 Lakeshore Drive, Twin Lake, MI 49457



Building Details

Building Area Total: 216 sq ft

Heating: Forced Air

Sewer: Public Sewer

Number Of Buildings: 1

Amenities & Features

Utilities: None

Fireplaces Total: 1

WaterSource: Public

Fees & Taxes

Tax Assessed Value: \$290,000

Tax Year: 2023

School Information

High School District: Lansing

Miscellaneous

CrossStreet: Jolly Road



Call us now

Phone: (231)730-8781

Email: tuckerbennerteam@gmail.com

Address: 2747 Lakeshore Drive, Twin Lake, MI 49457

