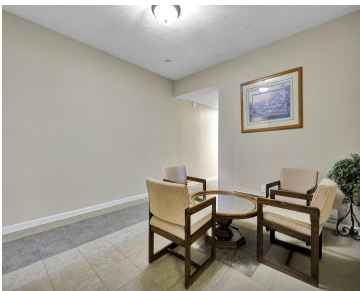


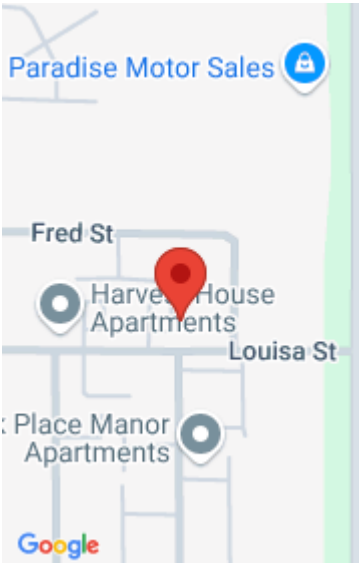
835, LOUISA, LANSING, MI, 48911

https://tuckerbenner.com



Introducing 835 Louisa St. Ste. 110, a prime commercial office space available for rent in Lansing, MI 48911. This versatile property awaits your personal touch to transform it into the ideal workspace for your business. Offering a comfortable 120 square feet of interior space, this affordable rental is priced at just \$250 per month, which [...]

- 0 baths
- Office
- Commercial Lease
- Active



Call us now

Phone: (231)730-8781  
Email: tuckerbennerteam@gmail.com  
Address: 2747 Lakeshore Drive, Twin Lake, MI 49457

# Basics

**Category:** Commercial Lease

**Status:** Active

**Lot size:** 0.74 sq ft

**Lot Size Acres:** 0.74 acres

**County:** Ingham

**Type:** Office

**Bathrooms:** 0 baths

**Year built:** 1973

**Business Type:** Professional/Office

# Building Details

**Building Area Total:** 120 sq ft

**Heating:** Forced Air

**Sewer:** Public Sewer

**Number Of Buildings:** 1

# Amenities & Features

**Utilities:** None

**Fireplaces Total:** 1

**WaterSource:** Public

# Fees & Taxes

**Tax Assessed Value:** \$290,000

**Tax Year:** 2023

# School Information

**High School District:** Lansing

# Miscellaneous

Call us now

Call us now



Phone: (231)730-8781  
Email: tuckerbennerteam@gmail.com  
Address: 2747 Lakeshore Drive, Twin Lake, MI 49457

