

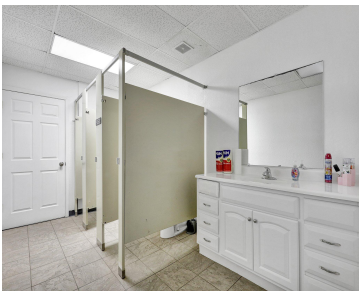
835, LOUISA, LANSING, MI, 48911

https://tuckerbenner.com

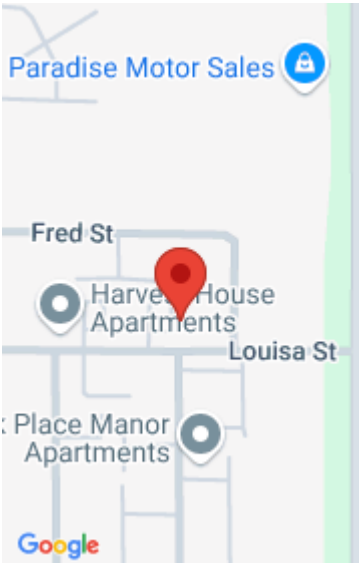


\$16.29

Introducing 835 Louisa St. Ste. 112, Lansing, MI 48911 – your next commercial office space for rent! This expansive office suite offers an impressive 221 square feet, providing you with ample room to tailor it to your specific needs and preferences. Priced at a competitive \$300 per month, this rate includes the convenience of trash [...]



- 0 baths
- Office
- Commercial Lease
- Active



Call us now

Phone: (231)730-8781
Email: tuckerbennerteam@gmail.com
Address: 2747 Lakeshore Drive, Twin Lake, MI 49457

Basics

Category: Commercial Lease
Status: Active
Lot size: 0.74 sq ft
Lot Size Acres: 0.74 acres
County: Ingham

Type: Office
Bathrooms: 0 baths
Year built: 1973
Business Type: Professional/Office

Building Details

Building Area Total: 221 sq ft
Heating: Forced Air

Sewer: Public Sewer
Number Of Buildings: 1

Amenities & Features

Utilities: None
Fireplaces Total: 1

WaterSource: Public

Fees & Taxes

Tax Assessed Value: \$290,000

Tax Year: 2023

School Information

High School District: Lansing

Miscellaneous

Call us now

Call us now



Phone: (231)730-8781
Email: tuckerbennerteam@gmail.com
Address: 2747 Lakeshore Drive, Twin Lake, MI 49457

