

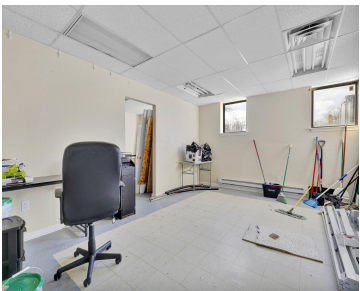
835, LOUISA, LANSING, MI, 48911

https://tuckerbenner.com

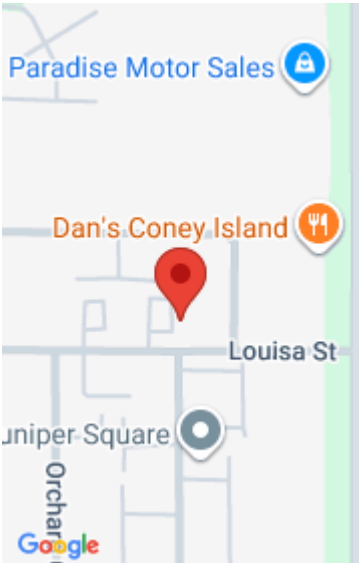


\$23.53

Introducing 835 Louisa St. Ste. 114, Lansing, MI 48911 – your next commercial office space for rent! This expansive office suite offers an impressive 216 square feet, providing you with ample room to tailor it to your specific needs and preferences. Priced at a competitive \$300 per month, this rate includes the convenience of trash [...]



- 0 baths
- Office
- Commercial Lease
- Active



Call us now

Phone: (231)730-8781
Email: tuckerbennerteam@gmail.com
Address: 2747 Lakeshore Drive, Twin Lake, MI 49457

Basics

Category: Commercial Lease

Status: Active

Lot size: 0.74 sq ft

Lot Size Acres: 0.74 acres

County: Ingham

Type: Office

Bathrooms: 0 baths

Year built: 1973

Business Type: Professional/Office

Building Details

Building Area Total: 153 sq ft

Heating: Forced Air

Sewer: Public Sewer

Number Of Buildings: 1

Amenities & Features

Utilities: None

Fireplaces Total: 1

WaterSource: Public

Fees & Taxes

Tax Assessed Value: \$290,000

Tax Year: 2023

School Information

High School District: Lansing

Miscellaneous

Call us now

Call us now



Phone: (231)730-8781
Email: tuckerbennerteam@gmail.com
Address: 2747 Lakeshore Drive, Twin Lake, MI 49457

