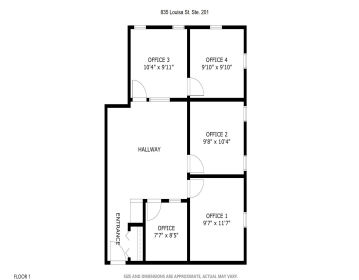
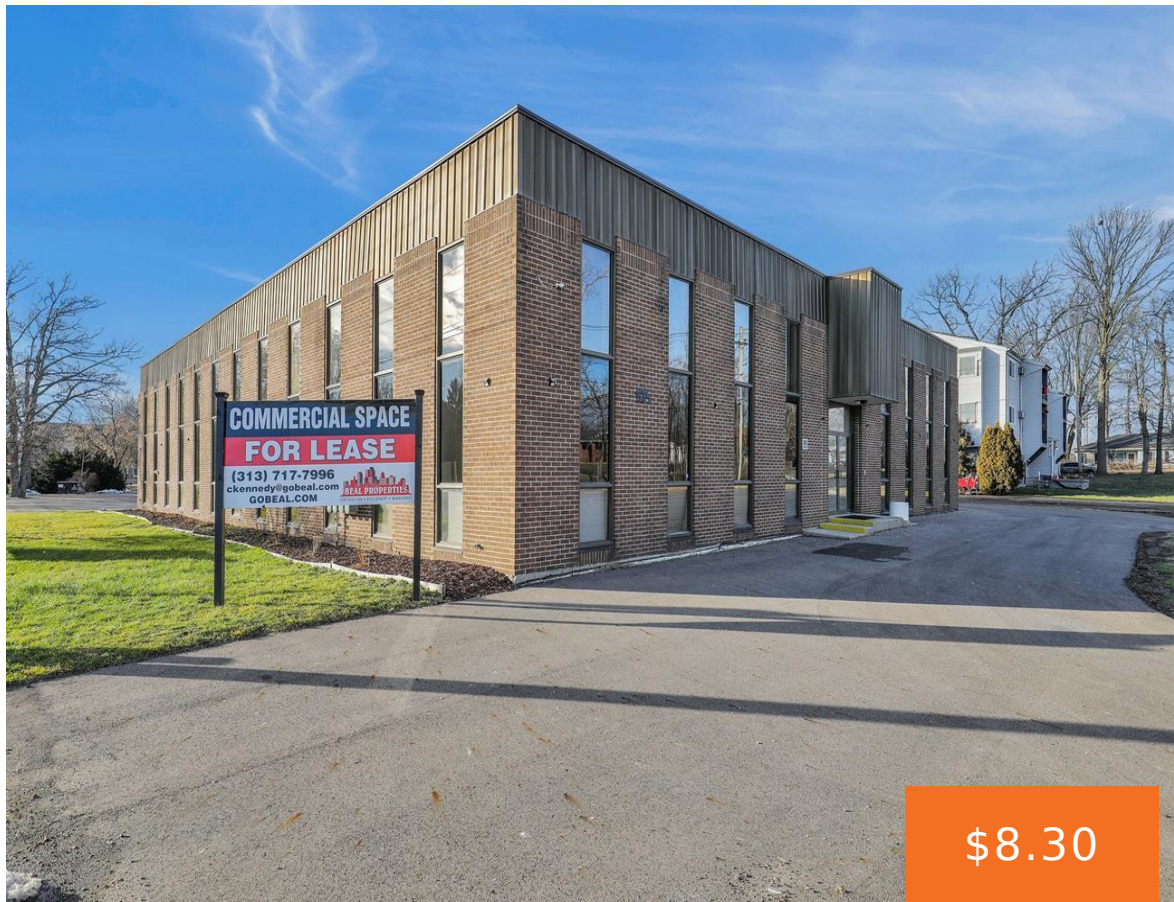


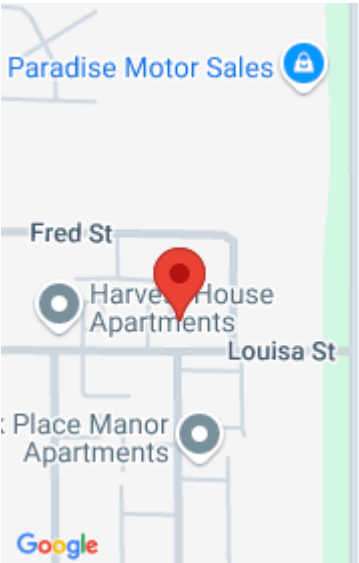
835, LOUISA, LANSING, MI, 48911

https://tuckerbenner.com



Introducing 835 Louisa St. Ste. 201, Lansing, MI 48911 – an exceptional commercial office space available for rent. This spacious commercial suite offers 940 square feet of versatile interior, providing a blank canvas for you to infuse with your unique vision and finishing touches. Priced at \$650 per month, this rental package includes the added [...]

- 0 baths
- Office
- Commercial Lease
- Active



Basics

Category: Commercial Lease

Status: Active

Lot size: 0.74 sq ft

Lot Size Acres: 0.74 acres

County: Ingham

Type: Office

Bathrooms: 0 baths

Year built: 1973

Business Type: Professional/Office

Building Details

Building Area Total: 940 sq ft

Heating: Forced Air

Sewer: Public Sewer

Number Of Buildings: 1

Amenities & Features

Utilities: None

Fireplaces Total: 1

WaterSource: Public

Fees & Taxes

Tax Assessed Value: \$290,000

Tax Year: 2023

School Information

High School District: Lansing

Miscellaneous

Call us now

Call us now



Phone: (231)730-8781
Email: tuckerbennerteam@gmail.com
Address: 2747 Lakeshore Drive, Twin Lake, MI 49457

