

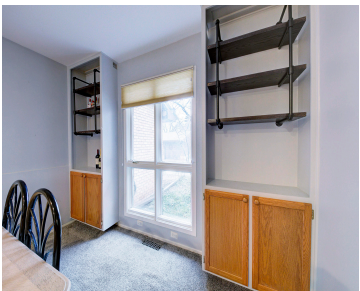
843, GREENHILLS, ANN ARBOR, MI, 48105

<https://tuckerbenner.com>

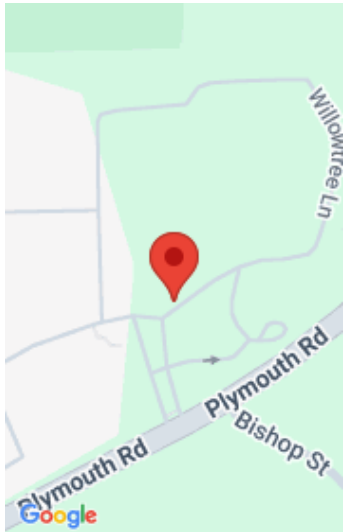


\$384,900

Beautiful 3 bedrms, 2 1/2 baths, Gorgeous kitchen w quality maple cabinets, granite countertops, large eat-in space w built-ins & shelving. Open living room with a large granite fireplace flanked by tall windows, combined with dining rm space. Sliding door wall opens out to large brick paver patio. Spacious private Master bedroom suite & renovated [...]



- 3 beds
- 3 baths
- Condominium
- Residential
- Active
- 2561 sq ft



Call us now



Phone: (231)730-8781

Email: tuckerbennerteam@gmail.com

Address: 2747 Lakeshore Drive, Twin Lake, MI 49457



Basics

Category: Residential

Status: Active

Bathrooms: 3 baths

Lot size: 0 sq ft

Bathrooms Full: 2

Rooms Total: 11

Bathrooms Half: 1

Type: Condominium

Bedrooms: 3 beds

Area: 2561 sq ft

Year built: 1972

Lot Size Acres: 0 acres

County: Washtenaw

Building Details

Building Area Total: 1736 sq ft

Construction Materials: Brick, Wood Siding

Architectural Style: Colonial

Sewer: Public

Heating: Forced Air

Stories: 2

Roof: Asphalt

Basement: Full

Amenities & Features

Laundry Features: Lower Level

Association Amenities: Clubhouse, Fitness Center, Indoor Pool, Pets Allowed, Spa/Hot Tub, Trail(s)

Parking Features: Garage Door Opener, Detached

Fireplace Features: Family Room, Gas Log

Garage Spaces: 1

WaterSource: Public

Appliances: Dishwasher, Dryer, Oven, Range, Refrigerator, Washer

Patio And Porch Features: Patio, Porch(es)

Fireplaces Total: 1

Cooling: Central Air

Fees & Taxes

Call us now



Tax Assessed Value: \$165,368

Tax Annual Amount: \$11,554.20

Tax Year: 2024

School Information

High School District: Ann Arbor

HighSchool: Huron High School

Middle Or Junior School: Clague Middle School

Miscellaneous

Road Surface Type: Paved

CrossStreet: Glazier Way

Listing Terms: Cash, Conventional

Call us now