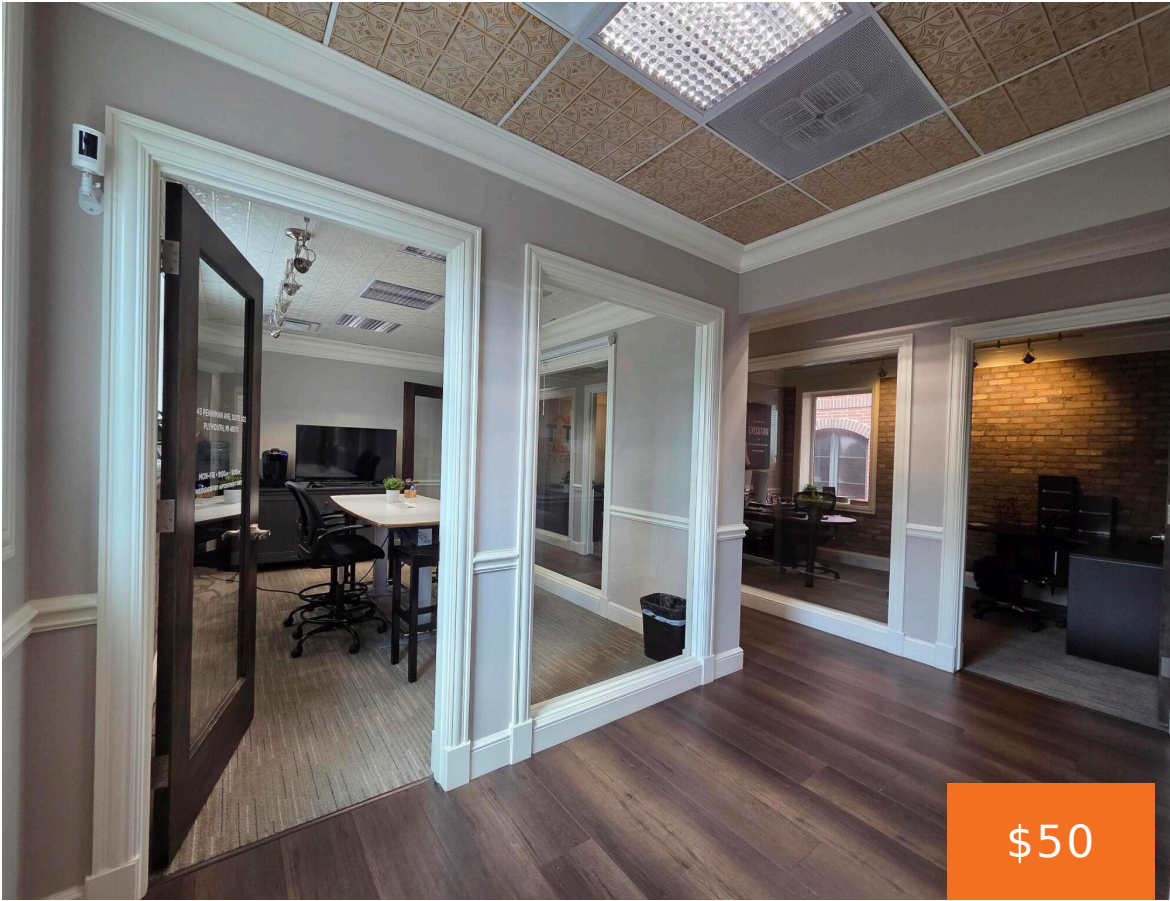


843, PENNIMAN, PLYMOUTH, MI, 48170

<https://tuckerbenner.com>



Prime Plymouth location offering flexible office solutions within an established professional office setting. Three private offices are available for immediate lease with access to a spacious shared conference room and kitchenette. Office furniture is available for tenant use, making this a convenient turnkey option. Lease terms are negotiable to accommodate a variety of business needs. [...]

- 0 baths
- Office
- Commercial Lease
- Active



Basics

Category: Commercial Lease
Status: Active
Lot size: 0.06 sq ft
Lot Size Acres: 0.06 acres
County: Wayne

Type: Office
Bathrooms: 0 baths
Year built: 1923
Business Type: Professional/Office

Call us now



Phone: (231)730-8781
 Email: tuckerbennerteam@gmail.com
 Address: 2747 Lakeshore Drive, Twin Lake, MI 49457



Building Details

Building Area Total: 368 sq ft

Heating: Forced Air

Number Of Units Total: 3

Number Of Buildings: 1

Amenities & Features

Utilities: Phone Available, Natural Gas Available, Electricity Available, Cable Available, Phone Connected, Natural Gas Connected, Electricity Connected, Cable Connected

Fireplaces Total: 1

Cooling: Central Air

Fees & Taxes

Tax Assessed Value: \$447,112

Tax Year: 2025

School Information

High School District: Plymouth-Canton

Miscellaneous

CrossStreet: Penniman & Main

Call us now



Phone: (231)730-8781

Email: tuckerbennerteam@gmail.com

Address: 2747 Lakeshore Drive, Twin Lake, MI 49457

