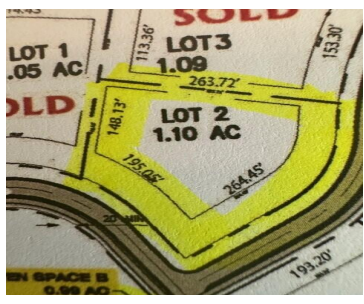


8462, KNOTTY PINE, KALAMAZOO, MI, 49009

https://tuckerbenner.com



\$110,000



New phase of Mystic subdivision; Mystic Pines 2 in Texas Township offering Beautiful 1 acre plus residential wooded lots. Nature abounds, including 12 acres of open space, parks and walking paths. Many lots conducive for walkout or daylight basements. Several gorgeous lots with pond view. Use your own Bulder or ours. Schools of choice available; [...]

- 0 baths
- Lot
- Land
- Active



Basics

Category: Land

Status: Active

Lot size: 1.1 sq ft

Lot Size Acres: 1.1 acres

Type: Lot

Bathrooms: 0 baths

Subdivision Name: MYSTIC PINES 2

County: Kalamazoo



Call us now

Phone: (231)730-8781
 Email: tuckerbennerteam@gmail.com
 Address: 2747 Lakeshore Drive, Twin Lake, MI 49457



Building Details

Current Use: Residential

Amenities & Features

Utilities: Phone Connected, Public Water Connected, Public Sewer Connected, Natural Gas Connected, Electric Connected, Phone Available, Storm Sewer Available, Public Water Available, Natural Gas Available, Electric Available, Cable Available, Broadband Available

Lot Features: Rolling Hills, Buildable, Sidewalk, Wooded, Corner Lot

Fees & Taxes

Tax Assessed Value: \$4,926

Association Fee: \$300

Tax Annual Amount: \$445.75

Association Fee Frequency: Quarterly

Tax Year: 2022

School Information

High School District: Kalamazoo

Miscellaneous

Road Surface Type: Paved

CrossStreet: Knotty pine Ln & Scots Pine Ci

Listing Terms: Cash, Other, Build to Suit, Conventional



Call us now

Phone: (231)730-8781

Email: tuckerbennerteam@gmail.com

Address: 2747 Lakeshore Drive, Twin Lake, MI 49457

