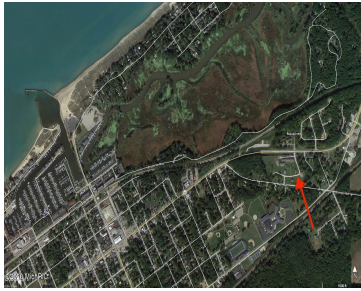


# 85, DIAMOND POINT, NEW BUFFALO, MI, 49117

https://tuckerbenner.com



Can't find exactly what you are looking for, BUILD IT! This lot is situated on a dead end-public water, public sewer, gas, electric and cable available. Enjoy the association clubhouse with a gas fireplace, full kitchen, and large lounge with a flat screen TV. You also have 24/7/365 access to the other amenities: Indoor Pool, [...]

- 0 baths
- Lot
- Land
- Active



## Basics

**Category:** Land

**Status:** Active

**Lot size:** 0.32 sq ft

**Lot Size Acres:** 0.32 acres

**Type:** Lot

**Bathrooms:** 0 baths

**Subdivision Name:** Diamond Point

**County:** Berrien

## Call us now



Phone: (231)730-8781

Email: tuckerbennerteam@gmail.com

Address: 2747 Lakeshore Drive, Twin Lake, MI 49457



---

## Building Details

**Sewer:** Public Sewer

---

## Amenities & Features

**Utilities:** Natural Gas Available, Electricity Available, Cable Available, None

**WaterSource:** Public

**Association Amenities:** Fitness Center, Indoor Pool, Spa/Hot Tub, Clubhouse

**Lot Features:** Buildable, Cul-De-Sac

---

## Fees & Taxes

**Tax Assessed Value:** \$15,117 **Association Fee Frequency:** Monthly

**Association Fee:** \$500

**Tax Year:** 2024

**Tax Annual Amount:** \$672

**Association Fee Includes:** Lawn/Yard Care, Snow Removal

---

## School Information

**High School District:** New Buffalo

---

## Miscellaneous

**CrossStreet:** US-12 and Bell Ave

**Listing Terms:** Cash, Conventional

### Call us now



Phone: (231)730-8781

Email: tuckerbennerteam@gmail.com

Address: 2747 Lakeshore Drive, Twin Lake, MI 49457

