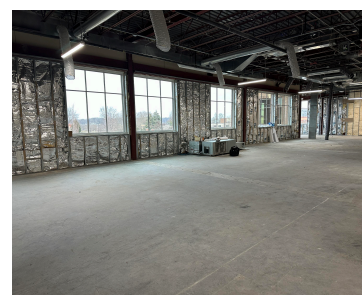


85, 8TH, HOLLAND, MI, 49423

<https://tuckerbenner.com>



Suite 210/230/250 of this 2nd floor 11,580 SF space is currently finished with 5 private offices, multiple open flexible areas for co-working/collaborative spaces or construction of additional private offices. A large break area overlooks the north side of the property with floor to ceiling windows. Combined with the open space of suite 250 will allow [...]

- 1 bath
- Office
- Commercial Sale
- Active



Basics

Category: Commercial Sale

Status: Active

Lot size: 1.82 sq ft

Bathrooms Full: 1

Business Type: Professional/Office

Type: Office

Bathrooms: 1 bath

Year built: 2002

Lot Size Acres: 1.82 acres

County: Ottawa



Call us now

Phone: (231)730-8781

Email: tuckerbennerteam@gmail.com

Address: 2747 Lakeshore Drive, Twin Lake, MI 49457



Building Details

Building Area Total: 2799 sq ft

Construction Materials: Brick

Stories Total: 3

Number Of Buildings: 1

Number Of Units Total: 1

Sewer: Public Sewer

Building Features: Bath Common Area

Amenities & Features

Inclusions: 1

Utilities: Phone Available, Cable Available, Broadband Available, Natural Gas Connected, Electric Connected

Water Source: Public **Fireplaces Total:** 1

Cooling: Central Air

Fees & Taxes

Tax Assessed Value: \$1,907,535

Tax Year: 2023

Tax Annual Amount: \$117,225.40

School Information

High School District: Holland

Miscellaneous

CrossStreet: College Ave, Columbia Ave

Listing Terms:
Conventional, Cash

Tenant Pays: Building Insurance, Common Area Maintenance, Management, Trash Collection



Call us now

Phone: (231)730-8781

Email: tuckerbennerteam@gmail.com

Address: 2747 Lakeshore Drive, Twin Lake, MI 49457

