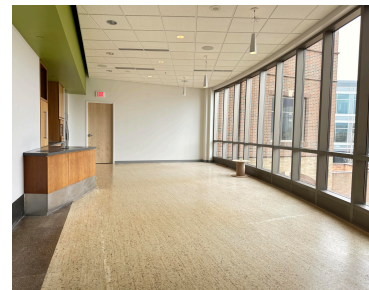
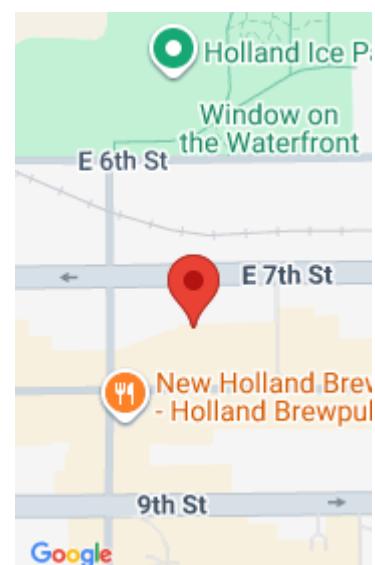


<https://tuckerbenner.com>



Suite 230/250 of this 2nd floor 8,344 SF space is currently finished with 5 private offices, multiple open flexible areas for co-working/collaborative spaces or construction of additional private offices. A large break area overlooks the north side of the property with floor to ceiling windows. Combined with the open space of suite 250 will allow [...]

- 0 baths
- Office
- Commercial Lease
- Active



Address: 2747 Lakeshore Drive, Twin Lake, MI 49457



# Basics

**Category:** Commercial Lease  
**Status:** Active  
**Lot size:** 1.82 sq ft  
**Lot Size Acres:** 1.82 acres  
**County:** Ottawa

**Type:** Office  
**Bathrooms:** 0 baths  
**Year built:** 2002  
**Business Type:** Professional/Office

# Building Details

**Building Area Total:** 8344 sq ft  
**Heating:** Heat Pump  
**Number Of Buildings:** 1

**Construction Materials:** Brick  
**Building Features:** Bath Common Area

# Amenities & Features

**Utilities:** Phone Available, Cable Available, Natural Gas Connected, Electricity Connected  
**Fireplaces Total:** 1  
**Cooling:** Central Air

# Fees & Taxes

**Tax Assessed Value:** \$437,999  
**Tax Year:** 2025

# School Information

**High School District:** Holland

Call us now

---

# Miscellaneous

**CrossStreet:** Columbia and College Ave

**Tenant Pays:** Management Fee, Trash, Common Area Maintenance, Building Insurance

## Call us now



Phone: (231)730-8781  
Email: tuckerbennerteam@gmail.com  
Address: 2747 Lakeshore Drive, Twin Lake, MI 49457

