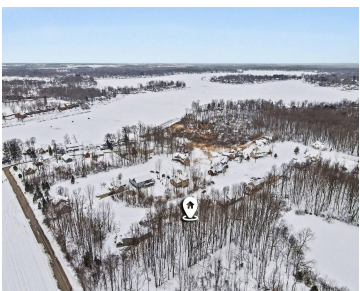


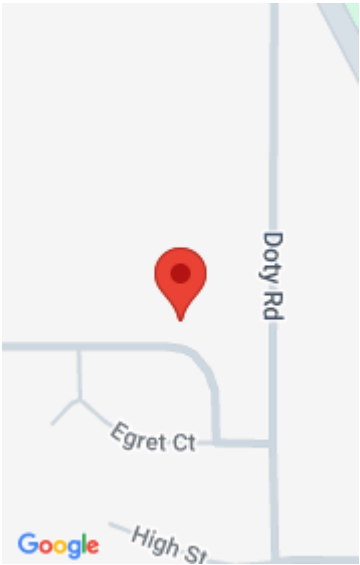
8655, HERON, WATERVLIET, MI, 49098

https://tuckerbenner.com



Situated within a lovely gated enclave on the shores of Paw Paw Lake, this rare homesite offers a lifestyle defined by privacy and prestige. The crown jewel of this property is the deeded boat slip—a highly coveted asset that is rare to secure elsewhere on the lake. Along with a prime location to build your [...]

- 0 baths
- Lot
- Land
- Active



# Basics

<b>Category:</b> Land	<b>Type:</b> Lot
<b>Status:</b> Active	<b>Bathrooms:</b> 0 baths
<b>Lot size:</b> 0.22 sq ft	<b>Subdivision Name:</b> NATURES COVE
<b>Lot Size Acres:</b> 0.22 acres	<b>County:</b> Berrien

# Building Details

**Sewer:** Public Sewer

# Amenities & Features

<b>Utilities:</b> Natural Gas Available, Electricity Available, Cable Available, Phone Available, Storm Sewer, None	<b>Association Amenities:</b> Pets Allowed, Security, Clubhouse, Pool
<b>Waterfront Features:</b> Lake	<b>Lot Features:</b> Level, Buildable, Cleared, Recreational, Wooded

# Fees & Taxes

<b>Tax Assessed Value:</b> \$34,125	<b>Association Fee Frequency:</b> Annually
<b>Association Fee:</b> \$3,000	<b>Tax Year:</b> 2024
<b>Tax Annual Amount:</b> \$1,825	<b>Association Fee Includes:</b> Lawn/Yard Care, Snow Removal, Trash, Water

# School Information

**High School District:** Watervliet

## Call us now

# Miscellaneous

**Road Surface Type:** Paved

**CrossStreet:** Blatchford and Doty

**Listing Terms:** Cash, Conventional

**Call us now**



Phone: (231)730-8781  
Email: tuckerbennerteam@gmail.com  
Address: 2747 Lakeshore Drive, Twin Lake, MI 49457

