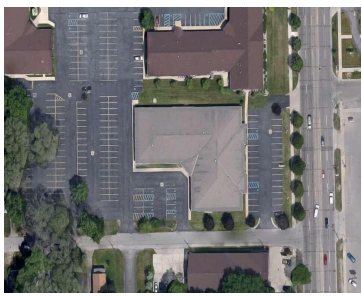


890, WASHINGTON, HOLLAND, MI, 49423

https://tuckerbenner.com



\$13.95



2,233 SF of office space for lease in the South Washington Office Park. Office could be utilized as medical or general use. Great location with high visibility on S Washington Ave close to Holland Hospital. Ample on-site parking available in front and rear of building. Sublease through 10/31/2025

- 0 baths
- Office
- Commercial Lease
- Active



Basics

Category: Commercial Lease
Status: Active
Lot size: 1.81 sq ft
Lot Size Acres: 1.81 acres
County: Allegan

Type: Office
Bathrooms: 0 baths
Year built: 1997
Business Type: Professional/Office



Call us now

Phone: (231)730-8781
 Email: tuckerbennerteam@gmail.com
 Address: 2747 Lakeshore Drive, Twin Lake, MI 49457



Building Details

Building Area Total: 2233 sq ft

Heating: Forced Air

Sewer: Public Sewer

Number Of Buildings: 1

Amenities & Features

Parking Total: 150 **Utilities:** Natural Gas Available, Electricity Available, Cable Available, Natural Gas Connected, Electricity Connected, Water Available, Sewer Available, Storm Sewer, Broadband

WaterSource: Public **Fireplaces Total:** 1

Fees & Taxes

Tax Assessed Value: \$1,354,185

School Information

High School District: Holland

Miscellaneous

CrossStreet: W 36th, W 35th



Call us now

Phone: (231)730-8781

Email: tuckerbennerteam@gmail.com

Address: 2747 Lakeshore Drive, Twin Lake, MI 49457

