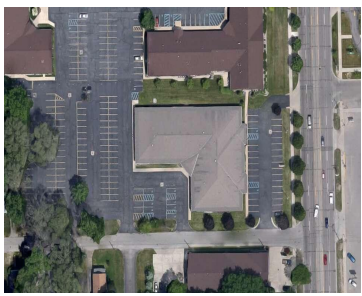


# 890, WASHINGTON, HOLLAND, MI, 49423

<https://tuckerbenner.com>



**\$16.50**



2,233 SF of office space for lease in the South Washington Office Park. Office could be utilized as medical or general use. Great location with high visibility on S Washington Ave close to Holland Hospital. Ample on-site parking available in front and rear of building. Sublease through 10/31/2025

- 0 baths
- Office
- Commercial Lease
- Active



## Basics

**Category:** Commercial Lease  
**Status:** Active  
**Lot size:** 1.81 sq ft  
**Lot Size Acres:** 1.81 acres  
**County:** Allegan

**Type:** Office  
**Bathrooms:** 0 baths  
**Year built:** 1997  
**Business Type:** Professional/Office



### Call us now

Phone: (231)730-8781  
 Email: [tuckerbennerteam@gmail.com](mailto:tuckerbennerteam@gmail.com)  
 Address: 2747 Lakeshore Drive, Twin Lake, MI 49457



---

## Building Details

**Building Area Total:** 2233 sq ft

**Heating:** Forced Air

**Sewer:** Public Sewer

**Number Of Buildings:** 1

---

## Amenities & Features

**Parking Total:** 150    **Utilities:** Water Available, Sewer Available, Natural Gas Available, Electricity Available, Cable Available, Natural Gas Connected, Electricity Connected, Storm Sewer, Broadband

**WaterSource:** Public    **Fireplaces Total:** 1

---

## Fees & Taxes

**Tax Assessed Value:** \$1,354,185

---

## School Information

**High School District:** Holland

---

## Miscellaneous

**CrossStreet:** W 36th St, W 33rd St



### Call us now

Phone: (231)730-8781

Email: [tuckerbennerteam@gmail.com](mailto:tuckerbennerteam@gmail.com)

Address: 2747 Lakeshore Drive, Twin Lake, MI 49457

